

Imaging Markers and Procedure Accessories

Imaging Solutions provides high-quality imaging markers and accessories to enhance the efficiency of medical imaging procedures. Our range includes skin markers, identification markers, and scaling tools for precise and consistent visualization. Additionally, we offer a selection of procedural tools and accessories, including biopsy-related instruments, to support various medical applications.

your single source supplier™





Trusted provider to medical imaging professionals since 2000

Imaging Solutions is celebrating over 25 years as a trusted provider of market-leading medical imaging equipment and accessories. With an unwavering commitment to innovation, quality, and service, we continue to deliver cutting-edge solutions that empower healthcare professionals worldwide.

25
years

your single source supplier TM

Table of Contents

Mammography	5
Bella Blankets® Protective Coverlets	5
TomoSPOT® for Digital Breast Tomosynthesis	6
Mole Markers	7
N-SPOTS® Nipple Marker	10
Palpable Mass Markers	13
Point of Pain Area of Concern Markers	13
Scar Markers	14
ColdSPOTS® Therapy	15
MRI	18
Oral Iodinated Contrast Aids	20
Radiation Oncology	22
PointGuards® Temporary Mark Covers	24
InkRight® Semi-Permanent Tattoo	25
CT Markers	26
GuideLines® CT Biopsy Grids	26
Localizers™ Localization Markers	27
CT-Scan / MRI Multi-Modality Fiducial	27
The Fast Find Grid: CT Guided Biopsy Grid	28
General Identification Markers	30
The World's Largest Range of X-ray Markers	30
Akucal EVO Suction™	48
Motorised Biopsy Needle	50

Regulatory Notice

Imaging Solutions operates in Australia, New Zealand, the United States, the European Union, and engages with resellers and distributors globally. Product availability in this catalogue may vary by region and is subject to local regulatory classifications and approvals. Certain products may only be available in jurisdictions where they have been registered or authorized by the relevant regulatory authorities. For details on product availability in your region, please contact Imaging Solutions.

About Beekley Medical

History and Mission

Founded in 1934, Beekley Corporation has evolved into the world leading supplier of simple innovative medical products that help imaging, surgical, and radiation therapy professionals save time, improve accuracy, enhance communication and provide a better patient experience.

Beekley introduced the X-SPOT®, the first ever professional skin marker for diagnostic imaging in 1984. The X-SPOT® replaced a variety of makeshift methods used at the time for communicating an area of concern on film. It quickly became a staple in radiology departments across the country and its quick adaption in all radiology modalities led Beekley to devote itself to the research and development of simple, low cost, disposable products that would help imaging professionals improve communication, productivity and patient care.

Today, Beekley Medical's product line has grown to include a broad range of radiologic skin markers, biopsy and patient care devices for Mammography; Breast Biopsy; Radiation Therapy; MRI; CT-Scan and General Radiology.

Manufacturing Standards

Beekley is FDA registered and ISO 13485:2003 certified. We maintain strict manufacturing standards with a strong commitment to excellence and customer satisfaction.

All Beekley products are:

- 100% guaranteed to perform as promised
- Lead-free, latex-free and hypo-allergenic

Beekley supports the fight against breast cancer by helping to fund research, prevention and early detection programs. A portion of the proceeds from the sale of Beekley SPOTS for mammography is donated to local and national breast cancer foundations to achieve these end.



Committed to the fight for the cure...



Bella Blankets® Protective Coverlets

Capture more breast tissue with Bella Blankets® protective coverlets.¹ Thin by design, Bella Blankets® allows technologists to position patients as close to the chest wall as possible. Textured material helps with “hard to position” breasts, prevents breasts from sticking to receptor plate to avoid skin tears, helps shield cuts or infections in the inframammary fold, and acts as a sanitary barrier.

Vertical Channel Technology™ (only from Beekley Medical®) allows air to push out and release upon application, reducing air bubbles. Easy-lift PIK-UP™ tab allows for easy removal of Bella Blankets® from the receptor plate without leaving residue.

- 50/box
- 22.9cm x 27.9cm,
- intended for use on 18cm x 24cm receptor plate

Bella Blankets BKM-310



- 50/box
- 29.2cm x 33.0cm
- intended for use on 24cm x 30cm receptor plate

Bella Blankets BKM-311



Vertical Channel Technology™



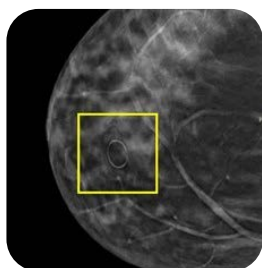
Easy-lift Pik-UP™ tab

Using Bella Blankets® aligns with proper positioning initiatives to support MQSA's EQUIP guidelines. Bella Blankets®' FDA 510(k) clearance applies to all mammography imaging equipment. Using Bella Blankets® during a mammogram is essentially the same average glandular dose as no coverlet on the receptor plate.²



TomoSPOT® for Digital Breast Tomosynthesis

Distinctly identify and permanently document nipples, moles, scars, palpable masses, and areas of pain or concern on mammographic images with Beekley® SPOT® skin markers for mammography. The result is clear communication between patient, technologist, and radiologist regarding areas of interest and more precise interpretation of the mammogram.



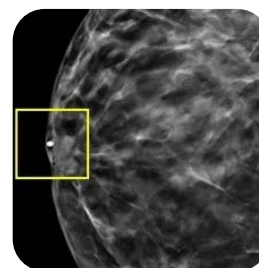
TomoSPOT® for marking moles 782

- 1mm low density, see-through ring
- pinch-free material
- designed for use with 3D breast tomosynthesis equipment

Contents per box: 54

TomoSPOT® for marking moles

BKM-782



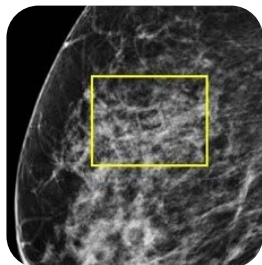
TomoSPOT® for marking nipples 781

- 2.3mm non-metallic pellet
- pinch-free material with adhesive-free center
- designed for use with 3D breast tomosynthesis equipment

Contents per box: 58

TomoSPOT® for marking nipples

BKM-781



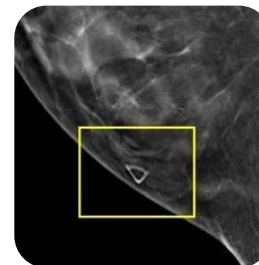
TomoSPOT® for marking non-palpable areas of concern / pain marker 785

- low density see-through square
- pinch-free material
- designed for use with 3D breast tomosynthesis equipment

Contents per box: 58

TomoSPOT® for marking non-palpable areas

BKM-785



TomoSPOT® for marking palpable masses 784

- low density see-through triangle
- pinch-free material
- designed for use with 3D breast tomosynthesis equipment

Contents per box: 116

TomoSPOT® for marking palpable masses

BKM-784



TomoSPOT® for Marking Scars

- 1mm diameter low-density see-through line
- pinch-free material
- designed for use with digital breast tomosynthesis equipment

Contents per box: 273cm cut to measure

TomoSPOT® for marking scars

BKM-783

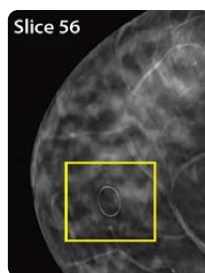


Figure 1 – Slice 56 shows mole marker at its clearest resolution.

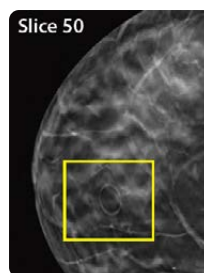


Figure 2 – Slice 50 shows mole marker beginning to fade when scrolling through the tomosynthesis dataset slices.

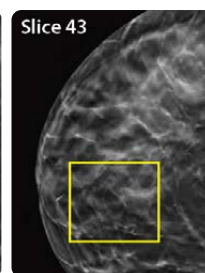
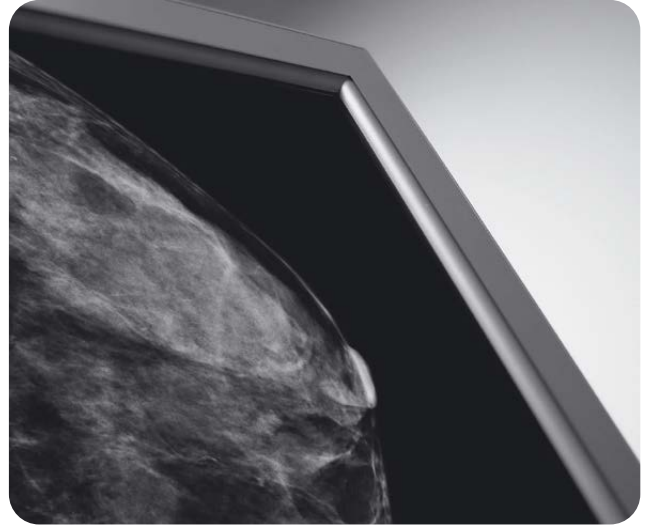
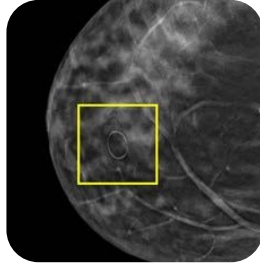


Figure 3 – Slice 43 is the point at which the mole marker is no longer visible.

Mole Markers

Provide certainty that densities on mammographic images highlighted by the O-shaped marker are moles and not areas of concern.



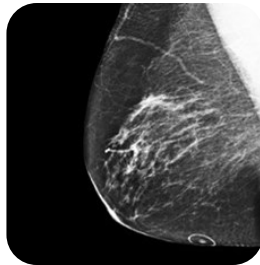
O-SPOT® Light Image® Soft 'n Stretchy® 691

- 1mm uniform low-density see-through ring
- pinch-free material
- compatible with both digital and analog equipment

Contents per box: 55

Florals™

BKM-691



Marking every patient, every time with O-SPOTS® Mole Markers reduces the risk of misdiagnosis by clearly identifying moles and other types of skin lesions.

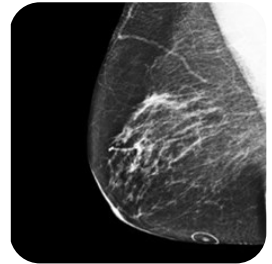
O-SPOT® 609

- 1.6mm semi-radiolucent ring
- burnout-resistant brighter image
- for use with analog equipment

Contents per box: 58

Florals™

BKM-609



O-SPOT® Designed for Digital® Soft 'n Stretchy®

- 1mm uniform ultra-sheer see-through ring
- pinch-free material
- designed for use with the most sensitive digital equipment

Contents per box: 55

Florals™

BKM-791



O-SPOT® 652 Light Image®

- 1mm low-density see-through ring
- highlights without obscuring
- compatible with digital equipment

Contents per box: 58

Florals™

BKM-652

Why Use O-Shaped Mole Markers?

Have you ever encountered a situation where a suspicious area showed up on a patient's film and you called the patient back for a diagnostic work-up, only to discover that the "suspicious area" was really a mole?

Would you like a more effective way to decrease the need for costly, time consuming additional views while providing a higher standard of care for your patients?

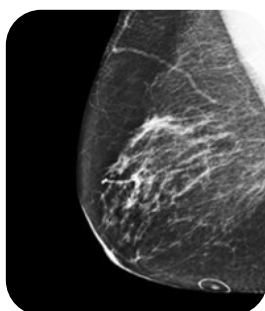
On mammograms, moles frequently present problems when they appear to mimic a new mass and possibly even a cancer. Many mammographers note the presence of moles on the breast diagram, but this fails to take into consideration that the shape of the breast is altered by compression. Raised moles image about 10% of the time and you never know when. They often image on one view and not the other and may image one year and not the next.

Reduce Risk

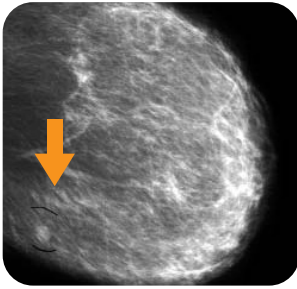
Marking every patient, every time with O-SPOTS® Mole Markers reduces the risk of misdiagnosis by clearly identifying moles and other types of skin lesions. Routine use of a mole marker the first time, every time in either analog or digital mammography, can clarify the questions presented by skin lesions mimicking pathology.

Adopting a Mole Marking Protocol Can:

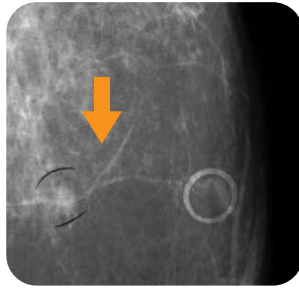
- Clarify questions and increase communication
- Eliminate unnecessary costly, time consuming additional views or repeats
- Save Radiologist reading time
- Reduce risk of misdiagnosis
- Relieve the patient of considerable anxiety
- In the worst case, prevent an unnecessary biopsy
- Provide permanent documentation for future reference wherever the patient's films travel



Case Presentations



On this MLO standard view, a nodule appears in the deep inferior left breast.



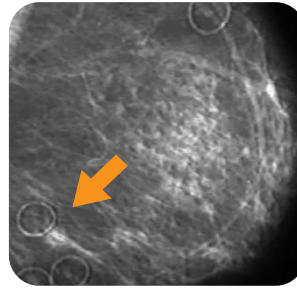
This MLO spot compression additional view taken with mole marker in place clarifies that the nodule is not the skin mole.

Case 1: Analog Study

A 60 year old woman presented for bilateral screening mammography. This study demonstrates a nodule in the deep inferior left breast that was questioned by the Radiologist on the standard view.

An MLO spot compression view of the left breast was performed with a mole marker in place. It indicates that the mammographic finding does not represent a skin mole. Accordingly, this prompted the performance of a left breast ultrasound and subsequently, a core biopsy that confirmed "Invasive Ductal Carcinoma".

In this case, the mole did not image on the standard view and therefore the nodule could have been mistaken for the mole. Marking the mole on the standard view would have immediately clarified that the density was not the mole.



A follow-up exam - MLO standard view with ALL moles marked with Beekley O-SPOTS identifies a parenchymal density that had previously been disregarded as a mole. It is now clear that this density was not a mole, subsequently biopsied and proved to be a carcinoma.

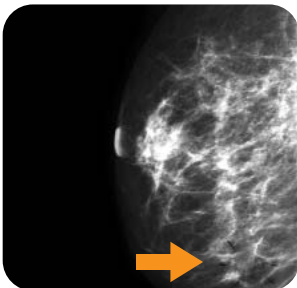
Case 2: Analog Study

On a previous mammogram, a patient with multiple skin moles had some of the moles marked. No other abnormality was seen at that time. On a follow-up examination at a different facility, the patient had all the skin moles marked with Beekley O-SPOTS®. It is now clear that there's a small parenchymal density between the moles that does not correspond to the mole markers.

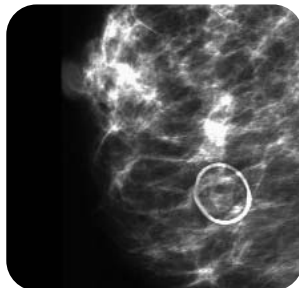
This was biopsied and subsequently proved to be a carcinoma. This case demonstrates the importance of marking ALL raised moles. Had this protocol been followed on the previous exam, the parenchymal density would have been identified earlier and reduced the risk for delayed diagnosis.

Cases provided by:

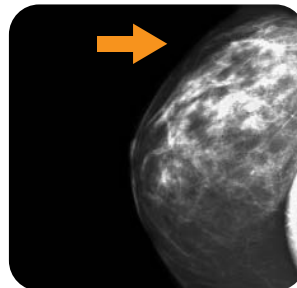
Medical Imaging Centre P. C., Bloomfield, Connecticut
Lawrence & Memorial Hospital, New London, Connecticut



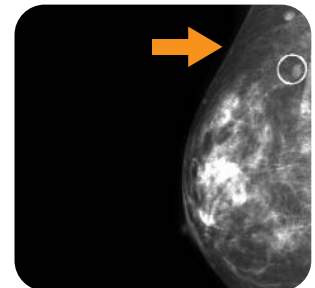
On this MLO standard view, a nodularity is seen projecting over the inferior aspect of the right breast.



An MLO spot compression view of the right breast using mole markers now clarifies that the nodularity is attributable to the skin mole obviating any further evaluation



On this CC standard view, a nodule appears posteriorly in the upper outer quadrant of the right breast.



Modified CC view of right breast taken with a mole marker in place clarifies that the mammographic finding does not represent the skin mole.

Case 3: Digital Study

A 74 year old woman presented for bilateral screening mammography. This study demonstrates a nodularity projecting over the inferior aspect of the right breast that was questioned by the Radiologist on the standard view.

An MLO spot compression additional view of the right breast utilizing mole markers was performed and indicates that the nodularity was attributable to a skin mole obviating any further evaluation. In this case, the extra view could have been prevented if the mole had been marked for the standard view.

Case 4: Digital Study

A 78 year old woman presented for bilateral screening mammography. This study demonstrates a nodule posteriorly in the upper outer quadrant of the right breast that was questioned by the Radiologist on the standard view.

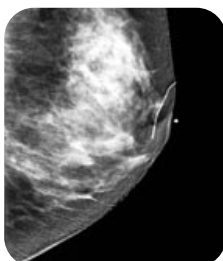
A modified CC view performed with a mole marker in place indicates that the mammographic finding does not correlate to a skin mole projecting over the lateral aspect of the breast which then prompted further evaluation. In this case also, marking the mole on the standard view would have immediately distinguished the mole from the nodule and may have prevented the need for the extra view.

N-SPOTS® Nipple Marker

Immediately identify nipple location on clinical images in mammography. Clinical studies suggest that nipple markers help expedite image critique and interpretation, detect movement, reduce retakes and improve positioning.

Choose the pellet size and density that best suits your needs. Most Beekley nipple markers are available in your choice of Pink or Florals™ (alternating pink and purple backgrounds).

1.5 mm Pellets



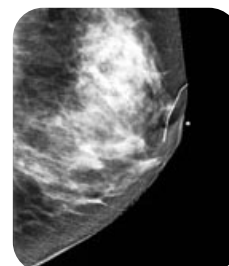
N-SPOT®

- 1.5 mm lead-free pellet
- Adhesive side tabs

Contents per box: 122

Florals™

BKM-608



X-SPOT®

- 1.5 mm radiopaque pellet
- Easy pick-up™ tab

Contents per box: 150

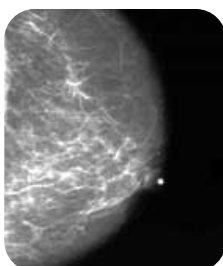
Blue

BKM-101

Florals™

BKM-601

2.0 mm Pellets



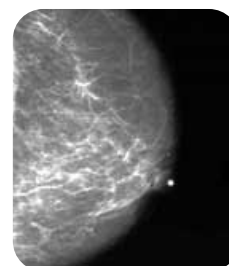
N-FREE®

- 2.0 mm lead-free pellet
- Extended side tabs and adhesive-free center

Contents per box: 110

Florals™

BKM-653



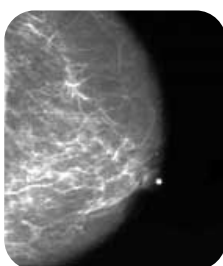
N-SPOT®

- 2.0 mm lead-free pellet
- Extended side tabs and adhesive-free center

Contents per box: 122

Florals™

BKM-610



Y-SPOT®

- 2.0 mm radiopaque pellet
- Easy pick-up™ tab

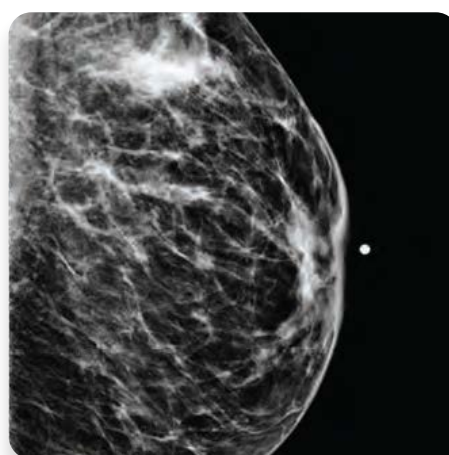
Contents per box: 132

Green

BKM-102

Florals™

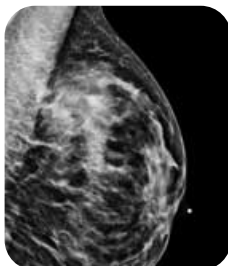
BKM-602



Designed for Digital

- Optimally designed for today's sensitive digital equipment
- Formulated to show brightly but without distraction
- Allows complete visibility of tissue detail

2.3 mm Pellets



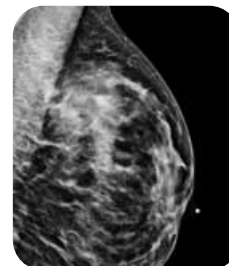
N-SPOT® Designed for Digital® Soft 'n Stretchy® Plus

- 2.3 mm non-metallic pellet
- Pinch-free™ material with larger adhesive-free center
- Designed for use with full-field digital equipment

Contents per box: 94

Florals™

BKM-790P



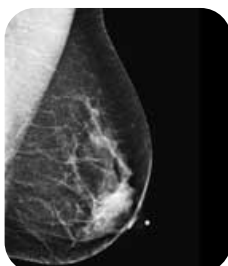
N-SPOT® Designed for Digital® Soft 'n Stretchy™

- 2.3 mm non-metallic pellet
- Pinch-free™ material with adhesive-free center
- Designed for use with full-field digital equipment

Contents per box: 94

Florals™

BKM-790



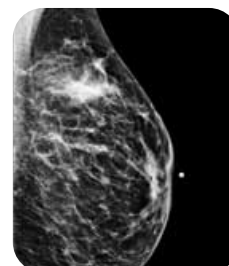
N SPOT® Designed for Digital®

- 2.3 mm lead-free pellet
- Extended side tabs and adhesive-free center
- Designed for use with full-field digital equipment

Contents per box: 110

Florals™

BKM-732



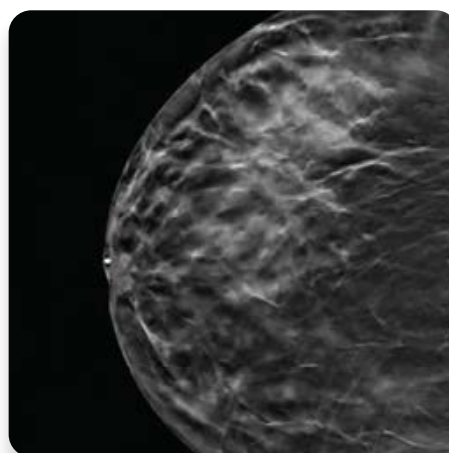
V-SPOTS® Designed for Digital®

- 2.3 mm lead-free pellet
- Easy pick-up™ tab
- Designed for use with full-field digital equipment

Contents per box: 130

Florals™

BKM-703



2.5 mm Pellets



N SPOT®

- 2.5 mm lead-free pellet
- Extended side tabs and adhesive-free center

Contents per box: 110

Florals™

BKM-632



N-SPOT® Soft 'n Stretchy

- 2.5 mm lead-free pellet
- Pinch-free™ material with adhesive-free center

Contents per box: 94

Florals™

BKM-690



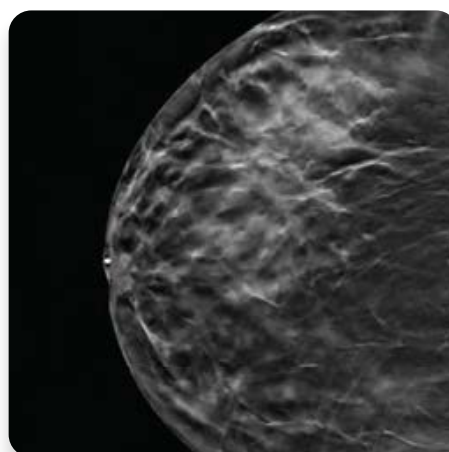
V-SPOT®

- 2.5 mm lead-free pellet
- Easy pick-up™ tab

Contents per box: 130

Florals™

BKM-603



Palpable Mass Markers

Readily identify symptomatic areas and provide permanent documentation that a palpable area was noted.



THE RAISED TRIANGLE ONLY
FROM BEEKLEY MEDICAL

TomoSPOT® for Marking Palpable Masses

- Low-density see-through triangle
- Pinch-free material
- Designed for use with digital breast tomosynthesis equipment

Contents per box: 116

TomoSPOT® Florals™

BKM-784



THE RAISED TRIANGLE ONLY
FROM BEEKLEY MEDICAL

A-SPOT® Light Image™

- Low-density see-through triangle
- Highlights without obscuring
- Compatible with digital equipment

Contents per box: 120

Florals™

BKM-651

Point of Pain Area of Concern Markers

Clarifies the area marked by a square as different from any other topographic or palpable area of study during interpretation such as point of pain, cyst, bug bite, rash, bruise, or ecchymosis.



THE RAISED SQUARE ONLY
FROM BEEKLEY MEDICAL

TomoSPOT® for Non-Palpable

- Low-density see-through triangle
- Pinch-free material
- Designed for use with digital breast tomosynthesis equipment

Contents per box: 116

TomoSPOT® Florals™

BKM-785



THE RAISED SQUARE ONLY
FROM BEEKLEY MEDICAL

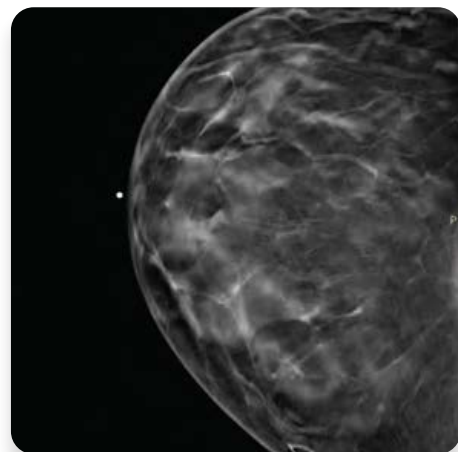
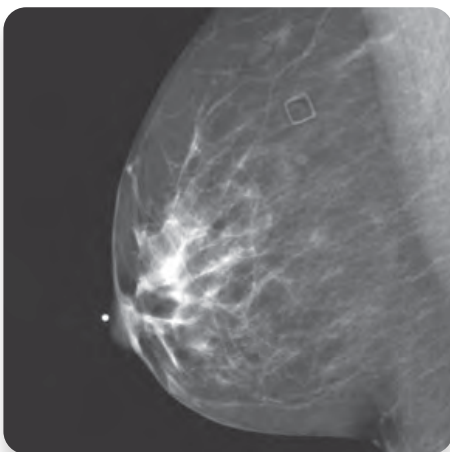
Altus® Light Image®

- Low-density see-through triangle
- Highlights without obscuring
- Compatible with digital equipment

Contents per box: 120

Florals™

BKM-654



Scar Markers

Help define architectural distortion at the biopsy site by delineating the exact location of incision.



S-SPOT® Designed for Digital® Soft 'n Stretchy®

- 1.0 mm diameter uniform ultra low-density see-through line
- Pinch-free® material
- Designed for use with the most sensitive digital equipment

Contents per box: 280 cm cut to measure roll / box

Florals™

BKM-777



S-SPOT® Light Image® Soft 'n Stretchy®

- 1.0 mm diameter uniform low-density see-through line
- Pinch-free® material
- Compatible with both digital and analog equipment

Contents per box: 280 cm cut to measure roll

Florals™

BKM-677



S-SPOT® Light Image™ 650

- 1.0 mm diameter uniform low-density see-through line
- Highlights without obscuring
- Compatible with both digital and analog equipment

Contents per box: 327 cm cut to measure roll

Florals™

BKM-650



S-SPOT®

- 0.33 mm diameter radiopagueline
- Burnout resistant for brighter image

Contents per box 363 cm cut to measure roll

Florals™

BKM-607



ColdSPOTS® Therapy

ColdSPOTS® for Breast Biopsy

Reduce bleeding, bruising, pain and inflammation after minimally invasive breast biopsies with Beekley's ColdSPOTS®.

ColdSPOTS® are discreet, self-adhesive cold therapy packs that provide targeted and effective cold for up to 3 times longer than ice, gel packs, or chemical packs. Low profile design and two adhesive side tabs allow ColdSPOTS® to be worn comfortably without shifting, ensuring targeted therapy to the afflicted area.



ColdSPOTS® Pillows

- 2" x 3" area with soft fabric-covered advanced gel pack and pretty floral design
- Self-adhesive side tabs for targeted and effective inconspicuous cold treatment following minimally invasive breast biopsy procedures
- Perfect for deeper procedures or sensitive skin
- Advanced gel cold pack stays cold 30-45 minutes
- Encased in soft fabric for added patient comfort
- Light, beautiful floral pattern

Contents per box: 50

ColdSPOTS® Pillows

BKM-505



ColdSPOTS®

- 2.5" x 1.5" area for cold treatment with a slim design and adhesive side tabs
- Self-adhesive side tabs for targeted and effective inconspicuous cold treatment following minimally invasive breast biopsy procedures
- Perfect for superficial area procedures
- Stays cold for 15-20 minutes

Contents per box: 100

ColdSPOTS®

BKM-500



Effective cold therapy should draw four times the amount of heat out of tissue to improve healing. What this means is that the product used needs to last longer at an even temperature to allow for effective treatment. Cold therapy products that quickly lose their ability to transfer heat, limit their effectiveness to reduce swelling, produce numbness, and ability to relieve pain.

Benefits with the Routine Use of Cold Therapy:

- Reduced bruising and bleeding
- Patient comfort and pain relief is assured
- Swelling and healing time is reduced
- Haematoma formation is prevented
- Reduce possible delay of Chemotherapy or Radiation Therapy that would follow a lumpectomy



Using ColdSPOTS®

- Pre-freeze ColdSPOT for a minimum of 2 hours before use
- Remove ColdSPOT and sterile gauze from outer packaging
- If desired, apply gauze pad to biopsy or aspiration site
- Remove adhesive* side tab covers
- Apply tabs to skin centering the cold pack over the site
- ColdSPOT can be reused by simply refreezing for another 2 hours

Only ColdSPOT has adhesive* side tabs for exact positioning to eliminate shifting and the need for bulky bandages.

ColdSPOTS® with Floral Design

- 2" x 3" gel pack stays colder 3 times longer, with pretty Floral design
- Self-adhesive side tabs for targeted and effective inconspicuous cold treatment following minimally invasive breast biopsy procedures

Contents per box: 68

ColdSPOTS® Pillows

BKM-502

Elequil Aromatabs® aromatherapy designed for the clinical setting

100% pure essential oils with a unique delivery system

Aromatherapy as an alternative holistic intervention is not new, however, some methods for delivery such as soaked cotton balls and diffusers can be messy and subject to inconsistencies.

Elequil Aromatabs aromatherapy was created specifically for the clinical setting to offer a simple nursing intervention to promote relaxation during pain, calm anxiousness, and/or soothe queasiness.

Used in all areas of healthcare, Elequil Aromatabs aromatherapy comply with most hospital infection prevention policies for its one-time use and a sealed-until-open aromatherapy tab.

By enhancing the patient experience, Elequil Aromatabs aromatherapy can help increase comfort measure scores on patient satisfaction surveys. Staff can also benefit from using Elequil Aromatabs aromatherapy to help cope with anxiousness and fatigue.

Elequil Aromatabs aromatherapy uses 100% pure, unadulterated essential oils that do not require a carrier oil and are free from pesticides and synthetics. Each aromatherapy tab lasts 8 hours or more.

- **Consistent amount of oils** - perfect for clinical studies and use in healthcare system-wide initiatives
- **Adheres to gown/clothing for individual use** - self-adhesive tab offers hands-free aromatherapy that is personal to each patient
- **Does not contain any metal/foil** - acceptable for use in OR, MRI, and anywhere else where metal/foil is contraindicated
- **Minimum/Maximum aroma exposure** - allows customization of aroma based on need and preference
- **Easy application and disposal** - eliminates extra work for staff
- **Patient/staff friendly** - stays within one's own personal space

Elequil Lavender-Sandalwood scent (Box of 50)	BKM-370
Elequil Orange-Peppermint scent (Box of 50)	BKM-371
Elequil Lavender scent (Box of 50)	BKM-372
Elequil Lavender-Peppermint scent (Box of 50)	BKM-373



How Clinical Aromatherapy Helps Promote Relaxation, Comfort, and Sleep

Our sense of smell is 10,000 times more sensitive than any of our other senses and recognition of smell is immediate. Inhaled vaporized odor molecules can bring back a flood of memories, influence people's moods, and even affect their work behavior. Smell can call up memories and powerful responses almost instantaneously.

The reason for this is that the olfactory bulb is part of the brain's limbic system - an area so closely associated with memory and feeling, that it is also called the "primitive" or "emotional brain."

This system is a network of connected structures near the middle of the brain linked with the central nervous system that includes the adrenals, the pituitary gland, and the hypothalamus, which regulate the body's heart rate, blood pressure, stress, and breathing.

Clinical studies have determined a significant positive effect of aromatherapy used in healthcare

Lavender has been proven to help with anxiousness and relaxation. Peppermint has been shown to help soothe queasiness.

When patients are more relaxed, pain and anxiousness can decrease. Elequil Aromatabs aromatherapy is a cost-effective way to help your initiatives to reduce the use of opioids and other pharmaceutical interventions.



System-wide usage of Elequil Aromatabs® aromatherapy:

- Integrative Medicine & Whole Health initiatives
- Acute Care units (ICU, Med-Surg, Pediatrics, Palliative care, Hospice)
- Perioperative Services (Pre-Op, OR, PACU, ASC)
- Emergency Departments
- Pain Management programs
- Diagnostic radiology (MRI, CT-Scan, Mammography, Breast Biopsy, Interventional)
- Women's Health (OB/GYN, Labor & Delivery)
- Oncology (Medical, Radiation)
- Infusion
- Behavioral Health
- Rehabilitation Therapy
- Elder Care (Memory Care)
- Staff support

Clinical studies, patient and customer testimonials, and additional information about clinical aromatherapy can be found at elequil.com



Ortho-SPOT Packets™ Skin Markers for MRI

Provide a precise, indentation-free landmark on every sequence in orthopedic MR imaging.

Ortho-SPOT Packets are sized just right for precise, indentation-free localization in orthopedic, breast, and pediatric MRI imaging.

Sized to image only on slices specific to the area of interest, OrthoSPOT Packets provides interpreting physicians a precise landmark that images brightly on all pulse sequences without distorting pathology.



Ortho-SPOT Packets™

- .75cm Radiance® filled packet
- ideal for orthopedic, pediatric, or breast imaging
- designed for optimum patient comfort

Ortho-SPOT Packets™

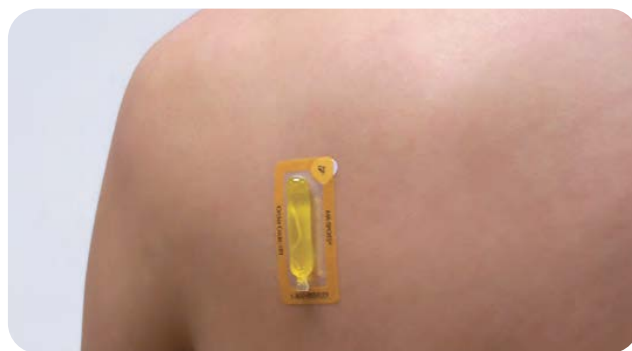
BKM-186



MR-SPOT® Skin Markers for MRI

Clearly identify areas of interest in MRI with a bright and consistent image on all MRI sequences.

MR-SPOT® MRI Skin Markers are available in two styles and four sizes to accommodate a variety of needs. MR-SPOT® tubes provide a sharp distinct image. MR-SPOT Packets™ provide optimum patient comfort and help reduce marker indentation.



MR-SPOT® (122)

- 1.5cm Radiance® filled tube
- ideal for extremities, soft tissue masses, and breast MRI

MR-SPOT®

BKM-122



MR-SPOT® Packets™ (185)

- 1.75cm Radiance® filled packet
- ideal for extremities, soft tissue masses, and breast MRI
- designed for optimum patient comfort

MR-SPOT® Packets™

BKM-185



MR-SPOT® (121)

- 3.0cm Radiance® filled tube
- ideal for thoracic spines and larger areas of interest

MR-SPOT®

BKM-121

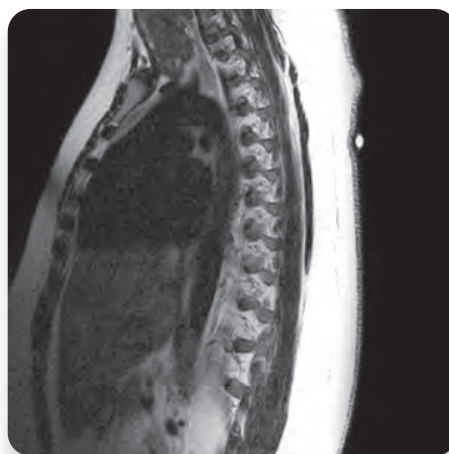
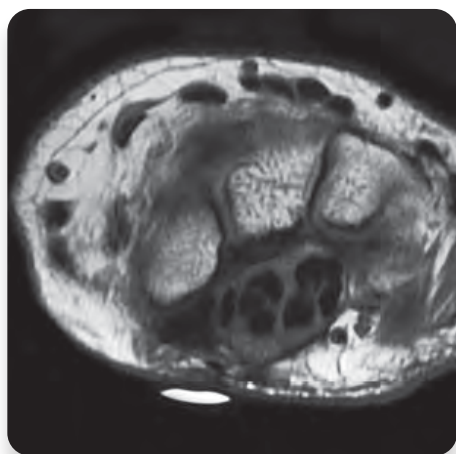


MR-SPOT® Packets™ (184)

- 5.0cm Radiance® filled packet
- ideal for thoracic spines and larger areas of interest
- designed for optimum patient comfort

MR-SPOT® Packets™

BKM-184



Breeza® Flavored Beverage for use with Oral Iodinated Contrast

Improve drinking compliance in diagnostic CT

Breeza flavored beverage for use with oral iodinated contrast is easy to drink and tolerate. Greater palatability over other methods leads to improved patient compliance with drinking protocols, resulting in more complete studies.

- For use with oral iodinated contrast in diagnostic CT
- Tropical fruit-flavored beverage
- Blocks the bitter taste of oral iodinated contrast
- Helps improve drinking compliance; patient satisfaction



How Taste Affects Your Oral Contrast Drinking Protocols

When patients have difficulty drinking the entire amount of oral contrast necessary for their abdominal scan in the required period of time, it has a domino effect on your imaging department's throughput and productivity.

Improved patient compliance, more complete studies

Developed by a radiologist, Breeza flavored beverage for use with oral iodinated contrast contains a bitterness blocker to mask the bitter taste of iodinated contrasts used in abdominal imaging.

Patients are more receptive to Breeza flavored beverage for use with oral iodinated contrast's appealing look and great tropical fruit flavor, making them more likely to drink the entire amount required for the exam with minimal coaching or need for interventional measures such as NG tubing.

Breeza Flavored Oral Iodinated Contrast

BKM-220

Breeza Provides Improved Palatability

Increase patient satisfaction

Breeza is the only flavored beverage made with a bitterness blocker to mask the bitter taste of oral iodinated contrast. Patients given contrast mixed with Breeza are more likely to comply with full drinking instructions - resulting in better initial scans, faster throughput, and happier patients.

Improve clinical outcomes

Breeza's ready acceptance among all patient types helps reduce the number of additional, unnecessary procedures that can result from reluctance or inability to drink prescribed dose.

Add to bottom line

With faster throughput and increased patient referrals, many facilities find Breeza to be a self-funding product and revenue generator.



Breeza® Flavored Beverage for Neutral Abdominal / Pelvic Imaging

Improve drinking compliance in enterography

Breeza flavored beverage for neutral abdominal/pelvic imaging's superior taste, texture, and tolerability over other neutral contrasts encourages patients to drink the full amount required; increases willingness to repeat exam.

- For use in CT or MR enterography
- Light lemon-lime flavored beverage
- Low viscosity beverage (10.5cP); easy to drink
- Helps improve drinking compliance; patient satisfaction



How Taste, Texture and Tolerability Affect Enterography Prep

In small bowel imaging, distention is the name of the game

Unfortunately, in order to get the desired bowel distention for imaging, patients must ingest a large volume of fluid: usually 1350 – 1500ML, approximately 44 – 51 fluid ounces, within a 45 minute time-frame.

To complicate matters, many patients in enterography are instructed to drink a 1% barium sulfate suspension which has a viscosity of 80.5cP in order to distend the small bowel.

Viscosity is a measure of a fluid's resistance to flow. The higher the viscosity, the more resistant to flow a fluid will be. For comparison purposes, water, arguably the most drinkable fluid for humans, has a viscosity of .899cP. A fluid with a viscosity of 80.5cP has a viscosity closer to light-weight cooking oils – corn oil has a viscosity of 72cP, olive oil a viscosity of 84cP.

The higher the viscosity of a fluid, the harder it is for patients to drink the entire amount of fluid needed for their exam

Breeza flavored beverage for neutral abdominal imaging is a non-carbonated, sugar-free, gluten-free beverage with a light, refreshing lemon-lime flavor and a viscosity of 10.5cP which is slightly more viscous than water, providing a better "mouth feel" and palatability for patients.

Researchers representing the divisions of radiology, gastroenterology, and biostatistics at the Mayo Clinic (Rochester, NY) performing an evaluation of patient tolerance, efficacy, and willingness to repeat the procedure found that Breeza flavored beverage for neutral/abdominal imaging scored significantly higher in taste, ease of drinking, and willingness to repeat the drinking protocol than the barium sulfate solution.



Patient Drinking Compliance in Enterography can be a "Breeze"

In most cases, it's not necessarily the volume of fluid that affects patient compliance with drinking instructions, it's the texture of the fluid.

A 1% barium sulfate solution has a viscosity of 80.5cP - a viscosity profile that's similar light weight to cooking oils. Even with best efforts to improve the taste, patients have a hard time drinking a quart of fluid at this viscosity.

Not only does this affect throughput as technologists may have to spend time coaching patients to drink, for many patients, the experience of the exam prep makes them unwilling to repeat the drinking protocol for future exams, which many routinely undergo due to their chronic condition.

Breeza Flavored Neutral Abdominal / Pelvic Imaging BKM-221

CT Simulation Skin Markers

Save time, increase accuracy in CT treatment planning. Unique non-metallic pellets, crosshair, and line image brightly without streaking or artifact.



CT-SPOT® line

Contents per box: 320 cm

- 2.0 mm diameter non-lead line
- for marking scars and field borders

CT-SPOT® line

BKM-118



CT-SPOT® pellet (2.3 mm)

Contents per box: 85

- 2.3 mm non-lead pellet
- for 3-point set-ups and isocenters

CT-SPOT® pellet

BKM-119



CT-SPOT® crosshair

Contents per box: 50

- 2.0 cm x 2.0 cm non-lead crosshair
- for 3-point set-ups, isocenters, and field borders

CT-SPOT® crosshair

BKM-123



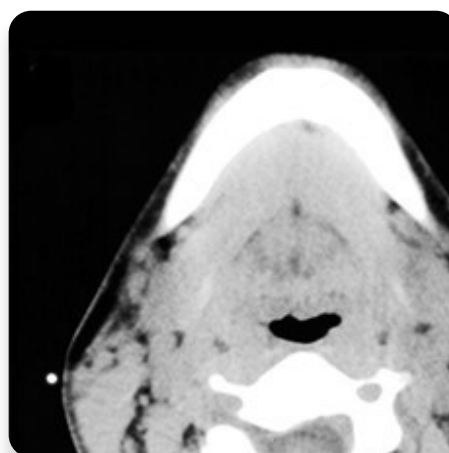
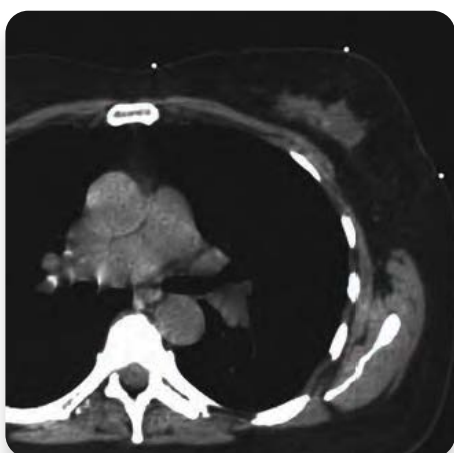
CT-SPOT® pellet (4 mm)

Contents per box: 85

- 4.0 mm non-lead pellet
- for 3-point set-ups and isocenters

CT-SPOT® pellet

BKM-120



Conventional Simulation Skin Markers

Identify and differentiate specific points of reference in conventional simulation treatment planning and on port films with Beekley Medical®'s SPOT® metallic pellets, lines, and arrow skin markers.

Convenient and easy to use, Beekley Medical®'s metallic SPOT® skin markers for radiation therapy are ideal for marking 3 point set-ups, isocenters, field borders and match lines on treatment sites.

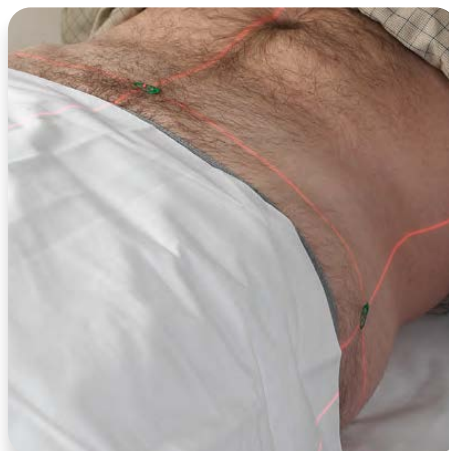
X-SPOT®

Contents per box: 150

- 1.5mm lead-free radiopaque pellet
- easy Pik-UP™ tab

X-SPOT®

BKM-101



Y-SPOT®

Contents per box: 132

- 2.0mm lead-free radiopaque pellet
- easy Pik-UP™ tab

Y-SPOT®

BKM-102



V-SPOT®

Contents per box: 130

- 2.5mm lead-free radiopaque pellet
- easy Pik-UP™ tab

V-SPOT®

BKM-603



D-SPOT®

Contents per box: 99

- lead-free radiopaque arrow with
- easy Pik-UP™ tab
- for marking nodes and outer canthus

D-SPOT®

BKM-104



Z-SPOT®

Contents per box: 150

- 4.3mm lead-free radiopaque pellet
- easy Pik-UP™ tab
- for marking port films

Z-SPOT®

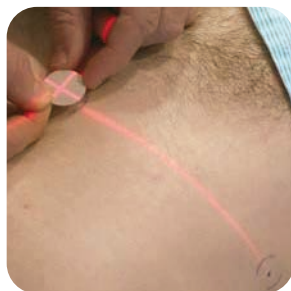
BKM-114



PointGuards® Temporary Mark Covers

Ensure accurate day to day reproducibility of set-ups during treatment with Beekley PointGuards®.

Precut clear adhesive covers provide a watertight seal and stay securely in place for up to 4 weeks. Proven to be less irritating to skin than other methods, PointGuards® are quick and easy to use.



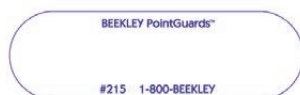
PointGuards®

Contents per box: 100

- 2.5 cm circular adhesive covers for smaller treatment planning marks

PointGuards

BKM-115



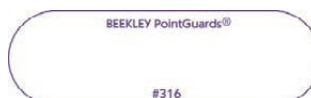
PointGuards®

Contents per box: 75

- 1.5 cm x 5.0 cm linear adhesive covers for
- Longer, more linear treatment planning marks

PointGuards

BKM-215



PointGuards® for Darker Skin Tones -

White Crosshair Design

Contents per box: 85

- 2.5 cm circular adhesive covers with crosshair design

PointGuards

BKM-318



PointGuards®

Contents per box: 100

- 2.5 cm circular adhesive covers for smaller, treatment planning marks
- See-through cover for quicker and more precise placement

PointGuards

BKM-315

PointGuards®

Contents per box: 75

- 1.5 cm x 5.0 cm linear adhesive covers for longer, more linear treatment planning marks
- See-through cover for quicker and more precise placement

PointGuards

BKM-316

InkRight® Semi-Permanent Tattoo

InkRight™ Dot and InkRight™ Crosshair are semi-permanent tattoo markers that provide a hygienic, efficient, and convenient alternative to traditional skin marking methods, making them an ideal solution for clinical applications.

Visible for up to 2 weeks

- The tattoo is visible upon application and darkens over time, staying visible for up to two weeks.

Semi-Permanent & Sanitary

- Replaces the need for sharpie markings
- Prevents cross-contamination
- Individually packaged for single patient use

Water Resistant

- Safe to use with moisturizers or lotions after application

No Refrigeration or Freezing Required

- One-year shelf life

Mess-Free Application

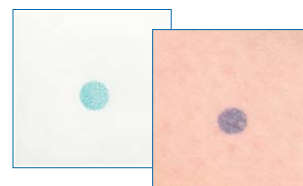
- No water or additional tools are needed for application
- Easy to apply and provide hassle-free handling

Patient-Friendly

- Provides a religion-friendly solution by avoiding permanent skin alterations
- Needle-free application ensures a pain-free experience

Easy to Reapply and Realign

- Tattoos can be easily reapplied for extended treatments
- Aligning over existing marks is simple, offering consistency and reliability for ongoing care

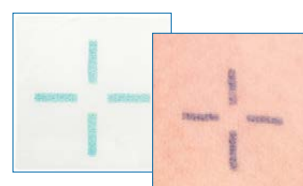


Semi-Permanent Tattoo - Dot

50 Tattoos / Box
50 Primer Wipes / Box

Dot

BKM-510



Semi-Permanent Tattoo - Crosshair

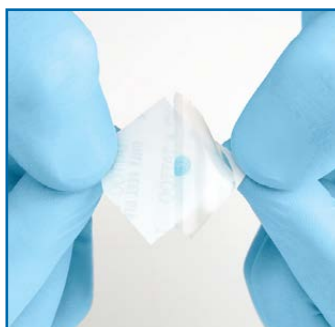
50 Tattoos / Box
50 Primer Wipes / Box

Crosshair

BKM-511



InkRight™
SEMI-PERMANENT TATTOO



GuideLines® CT Biopsy Grids

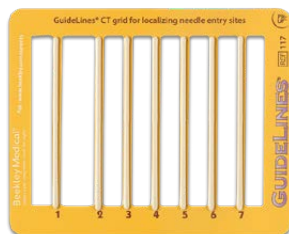
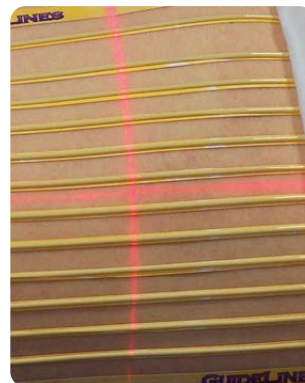
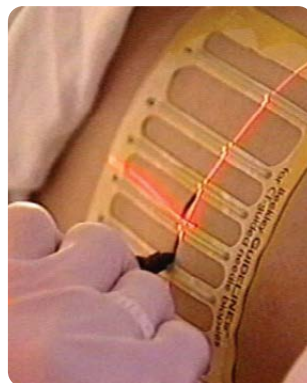
Optimise localization of needle entry sites and increase first-stick accuracy with the precision grid lines and all-over adhesive backing of GuideLines® and Mark-Through GuideLines®.

Self-adhesive CT Biopsy Grids Help Optimize Localization of Needle Entry Sites

GuideLines CT biopsy grids help you avoid misregistration of the skin mark and the need for repeat needle adjustments that can lead to painful re-sticks and unnecessary rescans for the patient.

Eliminate buckling, achieve first-stick accuracy with GuideLines®

GuideLines have an exclusive all-over adhesive backing that conforms to the natural curves of the patient's anatomy. The grid lays flat on the skin throughout the scan, ensuring that the mark on the skin corresponds to the appropriate grid line on the image.



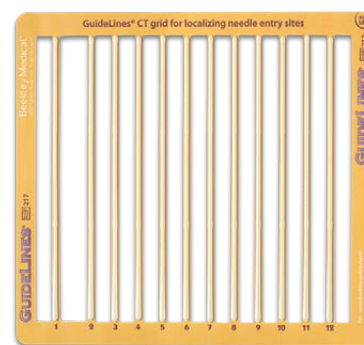
GuideLines®

Contents per box: 20

- 4" x 5" biopsy grid
- 7 non-metallic radiopaque lines
- open pane design for easy mark placement
- ideal for CT-guided biopsies of the neck and other small areas

GuideLines

BKM-117



GuideLines®

Contents per box: 15

- 7" x 7.5" biopsy grid
- 12 non-metallic radiopaque lines
- open pane design for easy mark placement
- ideal for CT-guided biopsies of abdomen and other large areas

GuideLines

BKM-217



Localizers™ Localization Markers

Reduce potential rescans caused by skin marker artifact with Localizers™.

Specifically calibrated for diagnostic CT, Localizers™ provide a bright image with minimal artifact for precisely identifying an area of interest.



Localizers™ 2.3mm

Contents per box: 85

- 2.3mm low-density pellet
- ideal for identifying soft tissue masses on the neck

CT-SPOT® pellet

BKM-210



Localizers™ 4.0mm

Contents per box: 85

- 4.0mm low-density pellet
- ideal for identifying areas of interest on abdominal cases or with larger patients

CT-SPOT® pellet

BKM-211

CT-Scan / MRI Multi-Modality Fiducial

Unique conical design assists in accurate image registration

PinPoint for Image Registration is a unique fiducial marker with a conical design to assist in accurate image registration under both CT and MRI.

The tapered cone directs probes to a 1.27mm diameter center hole which is a registration area 37% smaller than other commonly used fiducial markers for improved pinpoint accuracy.

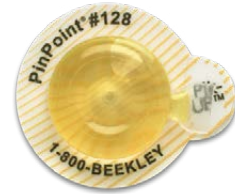
PinPoint®

Contents per box: 128

- ideal for image registration performed under CT and MRI
- conical design with a 1.27mm diameter center hole

PinPoint®

BKM-128



PinPoint® Accuracy

Directs attention to the precise area of interest.

As a multi-modality fiducial marker, PinPoint® provides:

Accuracy

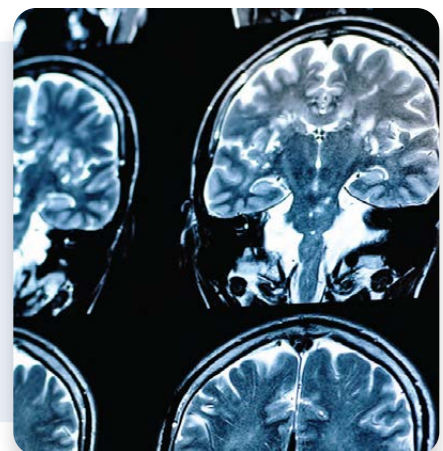
Unique conical design direct probes to 1.27mm diameter center hole; PinPoint®'s registration area is 37% smaller than other commonly used fiducial markers.

Unmistakable Imaging

Bright and consistent imaging in both CT and MRI; PinPoint® is easily identified on scans.

Time Savings

Easy application and removal; PinPoint®'s Pik-UP™ tab helps eliminate frustration and wasted time.



THE FAST FIND GRID™



The Fast Find Grid: CT Guided Biopsy Grid

The Fast Find CT Biopsy Grid is a disposable tool used for CT guided biopsy and drainage procedures. The Fast Find Grid saves time and money while ensuring accuracy.

The Fast Find Grid saves time and increases accuracy for all CT biopsies and drainage procedures.

The porous, non-woven fabric allows for flexible placement over the area and easy marking with the felt tip pen. The overall dimensions are 7.5 inches wide by 10.5 inches long, with the actual grid measuring 5 inches wide and 8 inches long; leaving 1 cm markings along each slice and clear indication of right and left side. With just two strips of adhesive along the back, the Fast Find Grid is easy to attach to any area of the body.

To use the grid, simply remove the backing from the tape, place over the area of interest and press down on the adhesive strips. When looking at the CT scan notice the 12 dots on the skin surface, and determine which dot best represents the point of entry. Then mark through the area with a felt tip pen, where the laser crosses the line. Remove the grid, and perform your biopsy.

The Fast Find Grid is CE marked, Latex Free, and comes as a pack of 25 grids. The Fast Find Grid increases the accuracy of needle placement and reduces the number of needle repositioning and rescanning. It is a single use product, which avoids cross contamination.

Most importantly, the Fast Find Grid increases accuracy and saves time. Visit FastFindGrid.com for more information or to order samples.

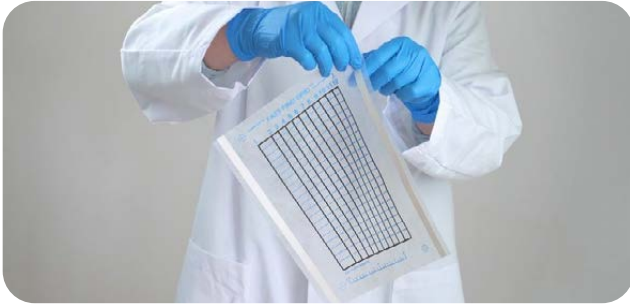
- Radio opaque grid yields a readily identifiable dot pattern on each CT image
- 1cm markings across each slice for precise needle placement
- Flexible grid material conforms closely to the patient's anatomy for accurate imaging
- Disposable grid prevents cross-contamination
- Tape strips assure non-slip positioning
- Fast, accurate pinpointing of area of concern saves time and money
- Porous grid allows accurate marking of area with felt-tip or marking pen

The Fast Find Grid

WBM-EG6500

Six simple steps to guaranteed speed, accuracy, and precision.

Step One: Remove backing from tape.



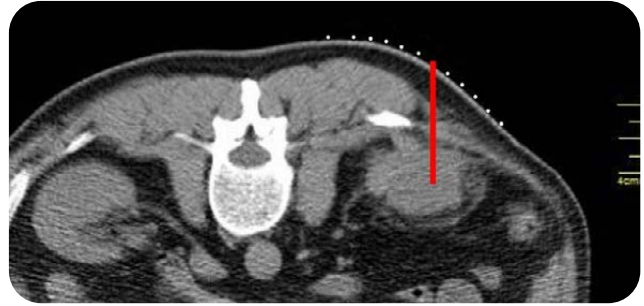
Step Two: Place and scan over the area of interest.



Step Three: Notice the twelve dots on the skin surface.



Step Four: Determine which dot best represents the point of entry.



Step Five: Mark through the grid with a felt tip pen where the laser crosses the line.



Step Six: Remove the grid and perform your biopsy.



CT Guided Grid Uses

The Fast Find Grid is used to find the point of entry in CT-guided interventional procedures including:

- Radiofrequency/cryoablation
- Minimally invasive spinal interventions
- Catheter/hardware placement
- Biopsy
- Drainage

Types of Pathology Aided With CT Scanned Needle Biopsy

- Aspirate fluid in the lung or abdomen
- Blood (hematoma) removal from abdomen
- Biopsy pleural
- Lung cancer
- Kidney cancer
- Bone cancer
- Biopsy lymph nodes in neck or groin
- Aspirate fluid from cysts
- Biopsy collections or masses in extremities
- Liver masses
- Pancreatic masses
- Retroperitoneal masses

Parts of the anatomy biopsied with the Fast Find Grid

- Liver
- Lungs
- Kidneys
- Pelvis
- Pancreas
- Pleura
- Lymph nodes
- Bone



The World's Largest Range of X-ray Markers



Lead Letters

Unmounted lead letters are the most economical means of positive x-ray identification. You can tape these letters to the x-ray cassette or table. Without the interior voids found in others die-cast lead letters.



Polycarbonate Markers

With durable red and green polycarbonate plastic, our Round and Square Markers are embossed with a solid lead "L" or "R" and engraved with custom initials, numbers, or mammography views. The engraved cavities are then filled with radiopaque epoxy.



Enclosed Markers

Enclosed markers are popular due to the wide range of available sizes. We ensure durability by enclosing lead letters between folded aluminum and clear plastic covers.



Mounted Lead Letters

Custom mounted letters or words on clear, white or black vinyl plastic, aluminum or copper are a more convenient method of x-ray identification. They are easier to handle than loose letters and can be ordered to fit various aluminum channel markers.



Mark-Clear Markers

The Mark-Clear Marker is our top-of-the-line product, enclosed solid lead letters between a laminated acrylic plastic and a durable vinyl or aluminum backing. With its colorful matte finish, bright white letters and consistent computer-engraved lettering, it's easy to read and has a professional look.



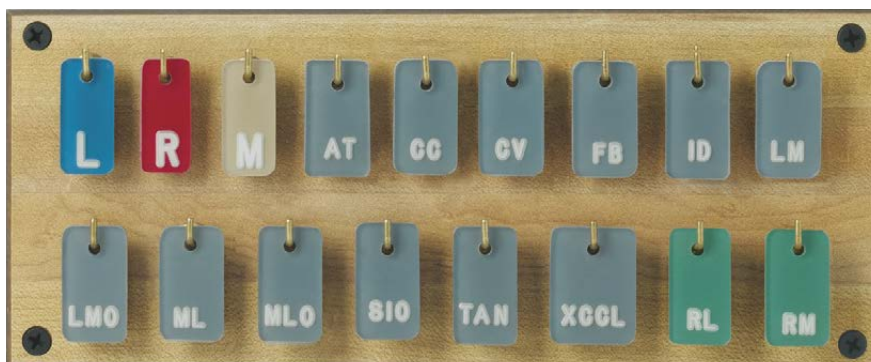
Embedded Markers

The Embedded Marker encases lead letters in crystal clear embedment plastic. We color the backgrounds to facilitate quick differentiation between views or departments. These markers are available with an aluminum or polycarbonate backing and as standard Right and Left markers, Custom markers, or Standard sets.

Mark-Fast Markers

You can use this set to make any standard positioning views indicated in the ACR technologist's manual.

- All legends are specified by the American College of Radiology.
- Solid lead letters embedded in laminated acrylic which is color-coded to aid in proper sequential placement. (Colors: R-Red, L-Blue, M-Tan, RM/RL-Celadon Green, Other Legends-Gray)
- White letters and matte faces enhance readability.
- Available with plastic (standard) or aluminum backing.
- Custom legends available.



Size of Storage Board: 10.8cm x 26cm (or 13cm x 26cm with nameplate), Size of Markers: 3.4cm high.

Hanging Hole Style

This set is designed for those who prefer to hold markers with adhesive tape.

- Legends can be placed closer together using this style.
- This set comes with a high quality Maple/Formica™ L-hook storage board. An optional nameplate is also available.

Complete set of markers with hook board	ACW-MMF517
Markers with hook holes without board	ACW-MMF617
Storage hook board only	ACW-MMB002
Single replacement marker with ACR legend	ACW-MMF501
Initial Marker (1-3 characters)	ACW-MIF501
Optional nameplate for hook board	ACW-MMB004



Size of Storage Board: 10cm x 25cm. Size of Markers: 3.41cm high with 1.9cm diameter suction cups.

Suction Cup Style

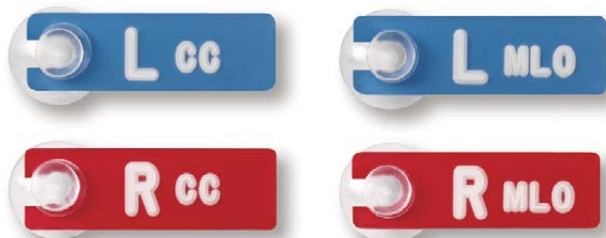
- Replaceable suction cups eliminate sticky tape or hard-to-clean Velcro™.
- Markers adhere firmly to the compression paddle, yet can be easily removed.
- Available with a smooth acrylic storage board.
- Replacement suction cups, individual markers, and technologist initial markers are available.

Complete set of suction cup markers with storage board	ACW-MMF117
Set of suction cup markers without storage board	ACW-MMF017
Single replacement suction cup marker	ACW-MMF201
Storage board for suction cup markers	ACW-MMB001
17 replacement suction cups	ACW-MSC017
Single replacement suction cup	ACW-MSC001
Initial marker (1-3 characters)	ACW-MIF011

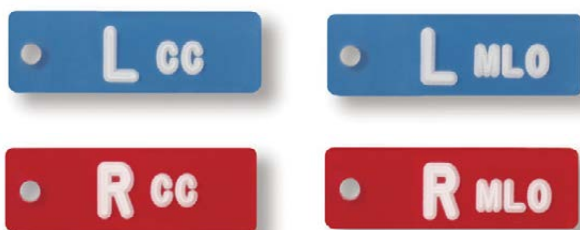
Mark-Well Markers

- ACR specified legends.
- Available with hanging holes or replaceable suction cups.
- Solid lead letters are enclosed in red or blue acrylic plastic and are colored white for greater visibility.
- These markers are an ideal choice when you require only a few legends, or want the convenience of preconfigured legends.
- Available with plastic (standard) or aluminum backing.**

Note: M (Magnification) can be added as a prefix or RL or RM as a suffix to these markers. For example, RMmlo or Lccrl. Please order as an "other unlisted legend".



Size: 1.6cm high x 5cm long x 35mm thick.



Size: 1.6cm high x 4.7cm long x 35mm thick.

*Standard ACR Views

L AT	R AT	L ID	R ID	L MLO	R MLO
L CC	R CC	L LM	R LM	L SIO	R SIO
L CV	R CV	L LMO	R LMO	L TAN	R TAN
L FB	R FB	L ML	R ML	L XCCL	R XCCL

Standard set of 4 suction cup markers at left ACW-MMW104

Single suction-cup marker (per Standard ACR Views below)* ACW-MMW211

Single suction-cup marker with unlisted legends ACW-MMW311

Storage board for suction cup markers. ACW-MMB001

Single replacement suction cup ACW-MSC001

Standard set of 4 markers with hanging hole and legends at left ACW-MMW004

Single marker with hanging hole (per Standard ACR Views above)* ACW-MMW201

Single markers with hanging hole and other unlisted legends ACW-MMW301

Storage hook board for Mark-Well Markers (up to 20 hooks). ACW-MMB003

Optional nameplate for hook board ACW-NFH020

Extra Long Mark-well Markers

Set of four standard views ACW-MML004

Single markers with ACR views ACW-MML001

Large replacement suction cups ACW-MSC101

**Add "-A" to the end of product code for aluminum-backed markers.



Size: 1.9cm high x 7.62 wide x 31mm thick.

Mark-well Initial Markers

With hanging hole, 1-3 characters ACW-MIW001

With hanging hole, 4-8 characters ACW-MIW004

With suction cup, 1-3 characters ACW-MIW011

With suction cup, 4-8 characters ACW-MIW014

Mark-Fast Initial Markers

With suction cup, 1-3 characters (bright green) ACW-MIF011

With hanging hole, 1-3 characters (bright green) ACW-MIF501

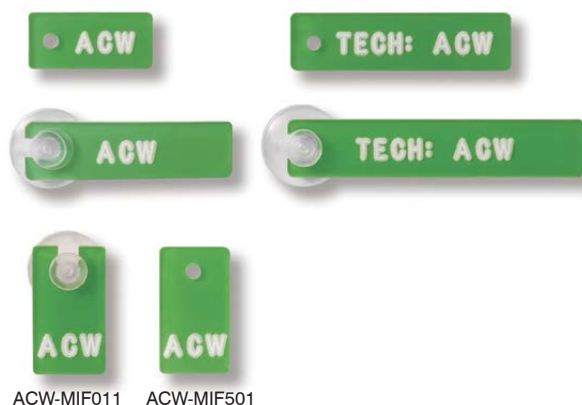
Replacement suction cup ACW-MSC001

Degree Markers

The degree marker set contains the following:
5°, 15°, 30°, 35°, 40°, 45°, 50°, 55°, 60°, 90°.

Single Degree Marker ACW-MMW501-3

Set of 10 markers ACW-MMW521-3



ACW-MIF011 ACW-MIF501



Size: 2.5cm x 1.6cm.



Size: 2.7cm wide x 3cm high x 3mm thick.



Size: 1cm x 3.8cm x 3mm thick.



ACW-MMW411 - Size: 7.3cm x 1.6cm x 3.5mm thick.



ACW-MSS422 - Size: 6cm x 9.5mm x 3mm thick.



ACW-MSS421 - Size: 6cm x 1.9cm x 3mm thick.



ACW-MMW401 - Size: 6.7cm x 1.6cm x 3.5mm thick.



ACW-MIS001

Size: 9.5mm x 4cm x 3mm



ACW-MIS004

Size: 9.5mm x 4cm x 3mm



ACW-MNS001

Size: 9.5mm x 3.8cm.



ACW-MNW001

Size: 1.6cm x 3.5cm.

Space-Saver Initial Markers

Can be backed with aluminum at additional cost (add "-A" to end of product code).

1-3 characters

ACW-MIS001

4-8 characters

ACW-MIS004

Abbreviated Conventional Mammography Markers

- ACR specified legends.
- Tough, red and green polycarbonate.
- Large 3/4" high solid lead R & L.
- Radiopaque 3/16" high lettering for views.
- Also available with aluminum backing at additional cost (add "-A" to end of catalogue number).*

Standard view shown at left

ACW-MAC104

Single marker with other ACR views*

ACW-MAC201

Single marker with other legends

ACW-MAC301

Abbreviated Space Saver

- Suitable for use when space is limited.
- Economical.

Standard view shown at left

ACW-MAC104

Single marker with other ACR views*

ACW-MAC201

Single marker with other legends

ACW-MAC301

Combined View/ Initial Markers

The Combined View/Initial Markers combine ACR approved legends with initials in one marker. The initials are separated from the legends to avoid confusion. These markers are available in the following configurations:

Combined View/Initial Mammogram

Marker with Suction Cup (Mark-Well Style)

ACW-MMW411

Combined View/Initial Mammogram Marker

(Space-Saver Style) - Small

ACW-MSS422

Combined View/Initial Mammogram Marker

(Space-Saver Style) - Large

ACW-MSS421

Combined View/Initial Mammogram Marker with Hole
(Mark-Well Style)

ACW-MMW401

Number Markers

- Number Markers meet ACR recommendation for dedicated unit number (radiopaque).
- We will also create custom markers that indicate such factors as mAs, kV, compression force, compressed breast thickness, degree of obliquity, etc.

***Standard ACR Views**

L AT	R AT	L ID	R ID	L MLO	R MLO
L CC	R CC	L LM	R LM	L SIO	R SIO
L CV	R CV	L LMO	R LMO	L TAN	R TAN
L FB	R FB	L ML	R ML	L XCCL	R XCCL

Mark-Clear Left and Right Markers

- These are our highest-quality markers.
- Bright white letters and a contrasting matte color background make the legends easy to read.
- The solid, thick letters make these legends very legible on x-ray film.
- The precision computergenerated placement of each letter makes these markers look more professional.

These markers are backed with vinyl plastic. If you desire aluminum or copper filters, just add "-A" or "-C" to the end of our catalogue number. Add "-V" if you desire vertical formatting of the letters.

*We apply Marker Foot™ Tape to the back of these markers. This tape allows the marker to be adhered repeatedly to different locations on the x-ray table or film cassette. Replacement tape is available (LAMF001).

Legends	With Hole	With Marker Foot Tape	Without Hole or Tape
L	ACW-FCL001	ACW-FCL101	ACW-FCL201
R	ACW-FCR001	ACW-FCR101	ACW-FCR201
L and R	ACW-FCP001	ACW-FCP101	ACW-FCP201
LEFT	ACW-FCL011	ACW-FCL111	ACW-FCL211
RIGHT	ACW-FCR011	ACW-FCR111	ACW-FCR211
LEFT and RIGHT	ACW-FCP011	ACW-FCP111	ACW-FCP211
L with one digit	ACW-FCL002	ACW-FCL102	ACW-FCL202
R with one digit	ACW-FCR002	ACW-FCR102	ACW-FCR202
L with two digits	ACW-FCL003	ACW-FCL103	ACW-FCL203
R with two digits	ACW-FCR003	ACW-FCR103	ACW-FCR203
L with three digits	ACW-FCL004	ACW-FCL104	ACW-FCL204
R with three digits	ACW-FCR004	ACW-FCR104	ACW-FCR204
LEFT with one digit	ACW-FCL012	ACW-FCL112	ACW-FCL212
RIGHT with one digit	ACW-FCR012	ACW-FCR112	ACW-FCR212
LEFT with two digits	ACW-FCL013	ACW-FCL113	ACW-FCL213
RIGHT with two digits	ACW-FCR013	ACW-FCR113	ACW-FCR213
LEFT with three digits	ACW-FCL014	ACW-FCL114	ACW-FCL214
RIGHT with three digits	ACW-FCR014	ACW-FCR114	ACW-FCR214



ACW-FCL001 - Size: 3.3cm x 1.6cm



ACW-FCR001 - Size: 3.3cm x 1.6cm



ACW-FCL014 - Size: 6.7cm x 1.6cm



ACW-FCR014 - Size: 6.7cm x 1.6cm



ACW-FCL004 - Size: 3.3cm x 1.6cm



ACW-FCL011 - Size: 5.4cm x 1.6cm



ACW-FCR004 - Size: 3.3cm x 1.6cm



ACW-FCR011 - Size: 5.4cm x 1.6cm



ACW-MNW001
Size: 1.4cm x 3.8cm



ACW-MNW001
Size: 1.4cm x 3.8cm

Mark-Clear Left and Right Duo Markers

- Mark-Clear Markers with twin legends.
- The yellow legends have copper filters embedded beneath them to allow technicians to make different x-ray exposures without relocating markers.

Legends	With Hole	Marker Foot™ Tape	Without Hole or Tape
L	ACW-DML001	ACW-DML101	ACW-DML201
R	ACW-DMR001	ACW-DMR101	ACW-DMR201
L with one digit	ACW-DML002	ACW-DML102	ACW-DML202
R with one digit	ACW-DMR002	ACW-DMR102	ACW-DMR202
L with two digits	ACW-DML003	ACW-DML103	ACW-DML203
R with two digits	ACW-DMR003	ACW-DMR103	ACW-DMR203
L with three digits	ACW-DML004	ACW-DML104	ACW-DML204
R with three digits	ACW-DMR004	ACW-DMR104	ACW-DMR204



Polycarbonate Left and Right Markers

- Use these markers to conveniently indicate Left and Right views.
- Order mixed sets (one round/one square) to quickly identify correct marker by feel.
- Identify technologists, departments, etc. with custom engraved letters or numbers.
- Markers are also available with "D" and "G" to indicate "Right" and "Left" in French.
- Manufactured in polycarbonate plastic which is virtually unbreakable and resistant to alcohol which may be used to sterilize the marker.

Marker Type	Left	Right	Pair
Square Marker	ACW-ASL001	ACW-ASR001	ACW-ASP001
Square Marker with one or two initials	ACW-ASL002	ACW-ASR002	ACW-ASP002
Square Marker with three initials	ACW-ASL003	ACW-ASR003	ACW-ASP003
Round Marker	ACW-ARL001	ACW-ARR001	ACW-ARP001
Round Marker with one or two initials	ACW-ARL002	ACW-ARR002	ACW-ARP002
Round Marker with three initials	ACW-ARL003	ACW-ARR003	ACW-ARP003

Embedded Left and Right Markers (Molded Plastic)

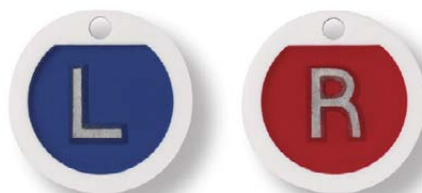
- Standard colors are shown. Other colors are available.
- Letters are embedded in a crystal-clear epoxy.



ACW-EPL001 - Left, ACW-EPR001 - Right, ACW-EPP001 Pair.
Size: 2.8cm x 3.5cm x 3mm



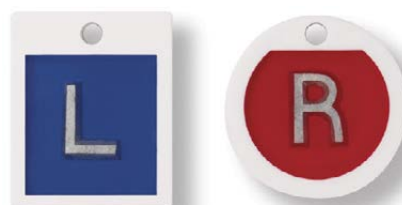
ACW-EPL003 - Left, ACW-EPR003 - Right, ACW-EPP003 Pair.
Size: 2.2cm x 4cm x 3mm



ACW-EPL101 - Left, ACW-EPR101 - Right, ACW-EPP101 Pair.
Size: 3.1cm Diameter x 3mm.



ACW-EPL103 - Left, ACW-EPR103 - Right, ACW-EPP103 Pair.
Size: 3.1cm Diameter x 3mm.



ACW-EPM001 - Mixed Pair, ACW-EPM003 - Mixed Pair with 1-3 Initials.



ACW-EPL021 - Left, ACW-EPR021 - Right,
ACW-EPP021
Pair. Size: 6.4cm x 2.2cm x 2.9cm

ACW-EPL032 - Left, ACW-EPR032 - Right,
ACW-EPP032 - Pair with 1-3 Initials.
Size: 6.4cm x 2.2cm x 2.9cm

ACW-EPL006 - Left, ACW-EPR006 - Right,
ACW-EPP006 - Pair.
Size: 4.1cm x 2.2cm x 3mm.



ACW-EPL011 - Left, ACW-EPR011 - Right,
ACW-EPP011 - Pair.
Size: 3.1cm x 5cm x 3mm.



ACW-EPL013 - Left, ACW-EPR013 - Right,
ACW-EPP013 - Pair with 1-3 Initials.
Size: 3.1cm x 5cm x 3mm.



ACW-EPL016 - Left, ACW-EPR016 - Right,
ACW-EPP016 - Pair with 1-3 Initials.
Size: 5cm x 3.1cm x 3mm.

Embedded Left and Right Markers (Aluminum)

- Standard colors are shown. Other colors are available.
- Letters are embedded in a crystal-clear epoxy.
- The background of durable aluminum adds density and improves the image.



ACW-EAL021 (Left). Size: 4.7cm x 1.9cm x 2.7mm



ACW-EAR021 (Right), Size: 5.4cm x 1.9cm x 2.7mm,
ACW-EAP021 (Pair)



ACW-EAL041 (Left), ACW-EAR041 (Right),
ACW-EAP041 (Pair),

ACW-EAL043 - 1-3 Initials (Left),
ACW-EAR043 - 1-3 Initials (Right),

ACW-EAP043 - 1-3 Initials (Pair), ACW-EAA001 - Arrow Only,
Size: 5.7cm x 1.9cm x 2.7mm.



ACW-EAL032 - 1-3 Initials (Left),
ACW-EAR032 - 1-3 Initials (Right),
ACW-EAP032 - 1-3 Initials (Pair),
Size: 6.4cm x 1.9cm x 2.7mm.



ACW-EAL003 1-3 Initials (Left),
ACW-EAR003 1-3 Initials (Right),
ACW-EAP003 1-3 Initials (Pair),
Size: 1.9cm x 3.8cm x 2.7mm



ACW-EAL003 1-3 Initials (Left),
ACW-EAR003 1-3 Initials (Right),
ACW-EAP003 1-3 Initials (Pair),
Size: 1.9cm x 3.8cm x 2.7mm



ACW-EAL003 1-3 Initials (Left),
ACW-EAR003 1-3 Initials (Right),
ACW-EAP003 1-3 Initials (Pair),
Size: 1.9cm x 3.8cm x 2.7mm.

ACW-EAL013 1-3 Initials (Left),
ACW-EAR013 1-3 Initials (Right),
ACW-EAP013 1-3 Initials (Pair),
Size: 1.9cm x 4.7cm x 2.7mm.

Embedded Left and Right Duo Markers

All markers on this page contain a copper filter in one half of a double marker or in two markers of a four marker set. This allows the technician to mark the films at varying x-ray exposures or subject densities without changing the markers.

Aluminium



Copper Filtered/Unfiltered Left and Right Markers
ACW-EAC001 - Set of 4, Filtered and Unfiltered

Copper Filtered/Unfiltered Left and Right Markers
ACW-EAC003 - Set of 4, Filtered and Unfiltered, 1-3 Initials

Combination Copper Filter Left and Right Markers
ACW-EACL51 - Left Marker, Filtered and Unfiltered
ACW-EACR51 - Right Marker, Filtered and Unfiltered
ACW-EACP51 - Pair, Filtered and Unfiltered

Molded Plastic



Copper Filtered/Unfiltered Left and Right Markers
ACW-EPC001 - Set of 4, Filtered and Unfiltered

Copper Filtered/Unfiltered Left and Right Markers
ACW-EPC003 - Set of 4, Filtered and Unfiltered, 1-3 Initials

Combination Copper Filter Left and Right Markers
ACW-EACL53 - Left Marker, Filtered and Unfiltered, 1-3 Initials
ACW-EACR53 - Right Marker, Filtered and Unfiltered, 1-3 Initials
ACW-EACP53 - Pair, Filtered and Unfiltered, 1-3 Initials

Combination Copper Filter Left and Right Markers
ACW-EPCL51 - Left Marker, Filtered and Unfiltered
ACW-EPCR51 - Right Marker, Filtered and Unfiltered
ACW-EPCP51 - Pair, Filtered and Unfiltered

Combination Copper Filter Left and Right Markers
ACW-EPCL53 - Left Marker, Filtered and Unfiltered, 1-3 Initials
ACW-EPCR53 - Right Marker, Filtered and Unfiltered, 1-3 Initials
ACW-EPCP53 - Pair, Filtered and Unfiltered, 1-3 Initials

Position Markers

Position Markers indicate laterality (Left or Right) and the inclination of the patient. Small lead balls inside these markers indicate whether the patient is horizontal or shows direction of inclination. You can purchase them with or without initials and with aluminum or molded plastic backing.



Aluminum Position Indicator Markers without Initials, Vertical
ACW-PAL01-V (Left), ACW-PAR01-V (Right), ACW-PAP01-V (Pair)
Size: 1.9cm x 5.7cm x 5mm



Aluminum Position Indicator Markers with 1-3 Initials, Vertical
ACW-PAL03-V (Left), ACW-PAR03-V (Right), ACW-PAP03-V (Pair)
Size: 1.9cm x 5.7cm x 5mm



Plastic Position Indicator Markers without Initials
ACW-PPL01-V (Left), ACW-PPR01-V (Right), ACW-PPP01-V (Pair)
Size: 2.9cm x 3.5cm x 6mm



Plastic Position Indicator Markers with 1-3 Initials, Vertical
ACW-PPL03-V (Left), ACW-PPR03-V (Right), ACW-PPP03-V (Pair)
Size: 3.1cm x 5cm x 6mm



Plastic Position Indicator Markers with 1-3 Initials, Horizontal
ACW-PPL03-H (Left), ACW-PPR03-H (Right), ACW-PPP03-H (Pair)
Size: 5cm x 3.1cm x 6mm



Aluminum Position Indicator Markers without Initials, Horizontal
ACW-PAL01-H (Left), ACW-PAR01-H (Right), ACW-PAP01-H (Pair)
Size: 5cm x 1.9cm x 6mm



Aluminum Position Indicator Markers with 1-3 Initials, Horizontal
ACW-PAL03-H (Left), ACW-PAR03-H (Right), ACW-PAP03-H (Pair)
Size: 5cm x 1.9cm x 6mm

High kVp Markers

- This marker encases a white 1/4" thick lead letter in a thick acrylic plastic.
- These thicker markers are used when procedures require high kVp exposures.



Size: 3.1cm x 5.7cm x 7mm



Size: 3.1cm x 5.7cm x 7mm



Size: 3.8cm x 5.7cm x 7mm



Size: 6cm x 2.5cm x 7mm

Description	Product Code
L (19mm)	ACW-HKL001
R (19mm)	ACW-HKR001
L (19mm) with one digit (12.7mm)	ACW-HKL002
R (19mm) with one digit (12.7mm)	ACW-HKR002
L (19mm) with two digits (12.7mm)	ACW-HKL003
R (19mm) with two digits (12.7mm)	ACW-HKR003
L (19mm) with three digits (12.7mm)	ACW-HKL004

Description	Product Code
R (19mm) with three digits (12.7mm)	ACW-HKR004
One Digit (12.7mm)	ACW-HKV501
Two Digits (12.7mm)	ACW-HKV502
Three Digits (12.7mm)	ACW-HKV503
One Digit (19mm)	ACW-HKV751
Two Digits (19mm)	ACW-HKV752
Three Digits (19mm)	ACW-HKV753

Custom Mark-Clear Markers

The Mark-Clear Marker comes with custom wording. The bright white (lead) letters, matte colored acrylic, and computer-generated letters, make a beautiful, readable marker. Just specify words desired. This marker uses 1/4" high letters. Dark blue is the standard color, although other colors are available.



Digits	Width And Height	With Hanging Hole	With Marker Foot™ Tape	Without Hole Or Tape
1	2.2cm x 1.6cm	ACW-FMC001	ACW-FMC101	ACW-FMC201
2-3	3.1cm x 1.6cm	ACW-FMC003	ACW-FMC103	ACW-FMC203
4-5	4.4cm x 1.6cm	ACW-FMC005	ACW-FMC105	ACW-FMC205
6-7	5.7cm x 1.6cm	ACW-FMC007	ACW-FMC107	ACW-FMC207
8-10	6.4cm x 1.6cm	ACW-FMC010	ACW-FMC110	ACW-FMC210
11-12	5.7cm x 1.6cm	ACW-FMC012	ACW-FMC112	ACW-FMC212

Replacement Marker Foot™ Tape is available in rolls (Catalogue Number LAMF001). One roll supplies enough tape for 100 markers.

Add "-C" or "-A" to the end of catalogue numbers if you desire markers with copper or aluminum.

Custom Embedded Markers

- Solid lead letters are embedded in a crystal clear plastic.
- The background rather than the embedding plastic is colored.
- This enhances contrast.
- Standard background color is red.
- The aluminum adds to image density while the snow-white polycarbonate plastic is exceptionally tough and highly visible.

Aluminium



1cm Marker,
Size: 1.9cm high x 3mm thick

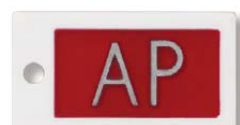


1.3cm Marker,
Size: 1.9 high x 3mm thick

Molded Plastic



1cm Marker,
Size: 2.2cm high x 3mm thick.



1.3cm Marker,
Size: 2.2cm high x 3mm thick.

Letter Size	Product Code - 1cm	Product Code - 1.3cm
1 Digit	ACW-EPW001	ACW-EPW011
2-3 Digits	ACW-EPW003	ACW-EPW013
4-5 Digits	ACW-EPW005	ACW-EPW015
6-7 Digits	ACW-EPW007	ACW-EPW017
8+ Digits	ACW-EPW008	ACW-EPW018

Digits	Product Code - 1cm	Product Code - 1.3cm
1 Digit	ACW-EAW001	ACW-EAW011
2-3 Digits	ACW-EAW003	ACW-EAW013
4-5 Digits	ACW-EAW005	ACW-EAW015
6-7 Digits	ACW-EAW007	ACW-EAW017
8+ Digits	ACW-EAW008	ACW-EAW018

Custom Enclosed Markers

- The Enclosed Marker is made of durable aluminum with dense lead letters, permanently enclosed between the aluminum background and a tough, clear plastic covering.
- You can create your own custom wording in the following letter heights to fit your exact needs:
3mm, 5mm, 6mm, 1cm, 1.3cm, 1.6cm, 1.9cm, 2.5cm.
- Any combination of letter sizes may be used to differentiate data such as patient positions from technicians' initials.
- Flat Face style letters are standard. Optional copper filters are available in 0.1mm, 0.4mm, and 0.8mm thickness.



Height Of Letters	1-5 Characters	6-10 Characters	11-15 Characters	16+ Characters
3mm	ACW-E12505	ACW-E12510	ACW-E12515	ACW-E12516
5mm	ACW-E18705	ACW-E18710	ACW-E18715	ACW-E18716
6mm	ACW-E25005	ACW-E25010	ACW-E25015	ACW-E25016
1cm	ACW-E37505	ACW-E37510	ACW-E37515	ACW-E37516
1.3cm	ACW-E50005	ACW-E50010	ACW-E50015	ACW-E50016
1.6cm	ACW-E62505	ACW-E62510	ACW-E62515	ACW-E62516
1.9cm	ACW-E75005	ACW-E75010	N/A	N/A
2.5cm	ACW-E99905	ACW-E99910	N/A	N/A
3.2cm Arrow	ACW-EA1250	N/A	N/A	N/A
3.8cm Arrow	ACW-EA1500	N/A	N/A	N/A

Add "-C" to the end of a number for markers with a copper filter added.

Unmounted Lead Letters, Numbers, and Arrows

These lead characters come in a wide selection of styles and sizes so you can easily match what you are presently using. Just send us a sample, and we will return it with your order.

Our letters are manufactured by a process which eliminates large interior voids found in die-cast letters, so that your x-ray legends will be clear and distinct. Since they are manufactured with flat backs, they can be easily and firmly mounted on any flat surface.

Flat Face is the standard style, although Condensed Deep Block is also a popular style because of its improved legibility with x-ray film. 1/4" thick Industrial is used in high kVp applications. Lead arrows are also available in 1/4", 1/2", 5/8", 1", 1 1/4", and 1 1/2" lengths.

Just specify the letter style, height (or arrow length), and quantity for each letter, number, or arrow. We will indicate the correct catalogue number on your invoice. For your reference, the catalogue number for each style, size, and mounting is listed on our price sheet. If you do not see a style that you need, please contact us. We either have it or can manufacture it.

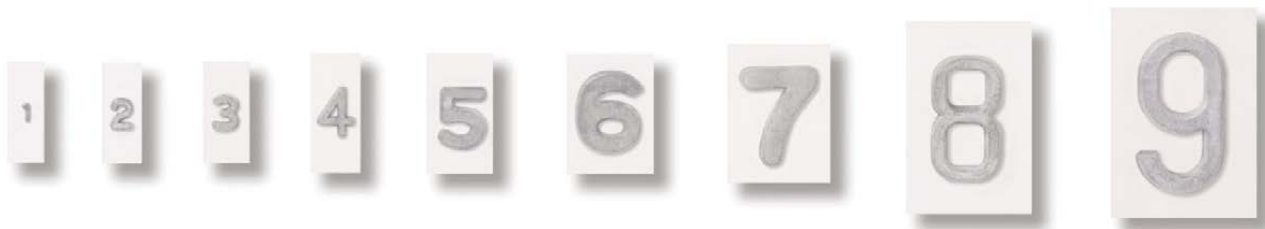
Your local x-ray dealer, working with our efficient, friendly, and knowledgeable staff, makes ordering these letters a pleasure. All characters shown at actual size.

Height in Millimeters	2.381	3.175	4.721	6.36	9.525	12.7	15.875	19.05	25.4
CONDENSED DEEP BLOCK				0	0	0	0	0	0
FLAT FACE	0	0	0	0	0	0	0	0	0
HAIRLINE	0	0	0	0	0	0	0	0	0
INDUSTRIAL					0			0	0
SHARP FACE	0	0	0	0	0	0	0	0	0
XRAY BLOCK		0	0	0					

Mounted Lead X-Ray Letters, Numbers, Arrows and Words

We custom-mount individual lead characters or complete words on plastic, aluminum, or copper to your specifications. We use flat-back letters and a special adhesive to insure that the letters stay permanently on their backing.

You will find mounted letters easier to handle, more economical than markers, and custom-made to fit your standard channel markers. You may also find that Aluminum or Copper mountings improve the letter contrast on your radiograph.



To order mounted individual characters or words, please indicate:

Letter Size - See previous page for the available sizes of all our letter styles.

Letter Style - See previous page for available letter styles. Unless you specify otherwise, we will mount the Flat Face Style.

Mounting Sizes, Individual Characters - The above are actual-size photographs of our standard mountings. Match your sample to these pictures, and reference the mounting number in your order. If your sample does not match, send us the sample, and we will return it with your order. You may also send sketches with exact dimensions or indicate the name of the channel marker you are using.

Mounting Sizes, Words - You can also use the above pictures and table to order standard mounted words. If your sample does not match any of the above pictures, send a sample, description, or sketch indicating letter style and height. Include the height and width of mounting background, and position of words, if not centered. Unless you indicate otherwise, words of greatest height will be mounted with an equal top and bottom margin; words of lesser height will rest on baseline of those taller words.

Mounting Material - All mountings will be centered on .020" thick white vinyl plastic, unless your sample, drawing or specified holder indicates otherwise. Industrial style letters will be mounted on black plastic, unless otherwise specified.

Accuracy - Please double-check your order specifications. We will not accept returns for mounted letters or words unless it is due to our error.

We can mount letters on the following materials:

Black Plastic (0.76 mm or 1.02 mm thick)

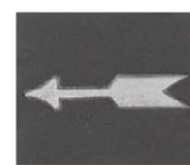
Clear Plastic (0.51 mm or 0.76 mm thick), mounted on the front (standard) or back

Aluminum (0.41 mm thick)

Copper (0.15 mm, 0.41 mm, 0.81 mm thick)

Specifying Quantity - Please indicate the quantity of each letter, number, arrow or word. For example, "9.5mm Flat Face Letters Mounted on 19mm White Plastic (#5 Mounting) 10 each A, B, C, D; 3 each R, L; 5 each 0-9" or "12.7mm Flat Face Words Mounted on 19mm High White Plastic, 10 each to read: RIGHT, 5 each to read: LEFT."

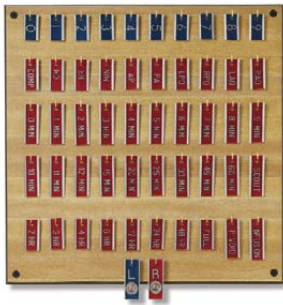
Note: Because of the large number of variations in mountings and letter styles, we have many catalogue numbers for these options. We suggest you give your dealer a product description similar to the examples under "Specifying Quantity" above. We will indicate the correct catalogue number and your dealer's catalogue number on our invoice and packing slip. Our catalogue numbers can be located on our current price sheet.



Style No.	Mounted Lead Letters
1	2mm figure on 1.6cm high plastic
2	3mm figure on 1.6cm high plastic
3	5mm figure on 1.6cm high plastic
4	6mm figure on 1.9cm high plastic
5	1cm figure on 1.9cm high plastic
6	1.3cm figure on 1.9cm high plastic
7	1.6cm figure on 3cm high plastic
8	1.9cm figure on 2.9cm high plastic
9	2.5cm figure on 3.1cm high plastic

IVP and Tomography Sets

IVP Embedded Sets



1cm Aluminum Set, (35 x 35cm) 52 Markers.

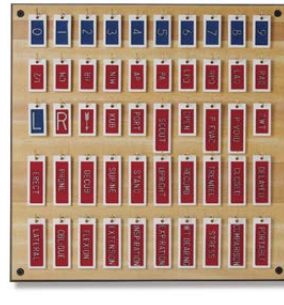
ACW-EAS252



1cm Plastic Set, (35 x 35cm) 52 Markers.

ACW-EPS252

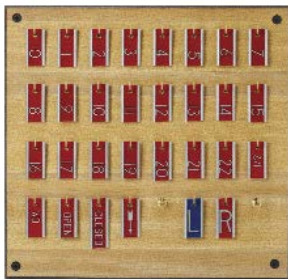
General Embedded Set - Molded Plastic



1cm Plastic Set, (35 x 35cm) 50 Markers.

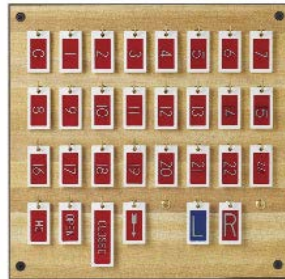
ACW-EPS050

Embedded Tomography Sets



1cm Aluminum Set, (22cm x 21cm) 30 Markers.

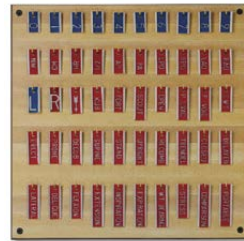
ACW-EAS332



1cm Plastic Set, (22cm x 21cm) 30 Markers.

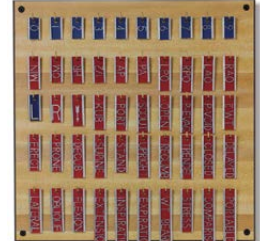
ACW-EPS332

General Embedded Sets - Aluminum



1cm Aluminum Set, (35 x 35cm) 50 Markers.

ACW-EAS050



1.3cm Aluminum Set, (35 x 35cm) 50 Markers.

ACW-EAS150

Enclosed Marker Sets

- In addition to custom markers, you may purchase our money-saving Enclosed Marker Sets which contain most of the commonly used legends.
- The set comes with a very durable, attractive, 35 x 35cm Formica™ hook board with 50 markers (as pictured, including an extra "0" and "1"), 50 assembled hooks, and four mounting screws with anchors.
- The standard finish is maple/butcher-block style with dark stained beveled edges.
- Optional engraved nameplates to identify the hospital or department can also be ordered.
- Enclosed Marker Sets are available in either 6mm, 1.3cm, or 1.6cm high legends.

You may specify unlisted legends to meet your special needs.

- In addition to custom sets, you may purchase Embedded Markers as a standard set containing commonly used legends.
- Each set comes with a very durable, attractive 35 x 35cm Formica hook board with 50 markers, 50 assembled hooks, and four mounting screws with anchors.
- Optional engraved nameplates to identify the hospital or department can also be ordered.



Set with 6mm Letters

ACW-ENS250

Set with 1.3cm Letters

ACW-ENS500

Set with 1.6cm Letters

ACW-ENS625

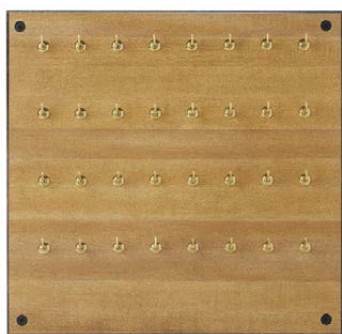
Storage Boards

We can furnish you with a storage board that will match your storage needs. The selection includes a variety of hook boards, a board for suction cup markers, and a board for markers with Marker-Foot™ tape. Our tough Maple Formica™ boards resist scratching while retaining the beauty of wood. On most boards you can identify departments by adding optional nameplates or engraved names. Storage boards on this page do not include pictured markers.

Formica™ Hook Boards



Assembled 50 Hook (35 x 35cm)	ACW-FHB150
Unassembled 50 Hook (35 x 35cm)	ACW-FHB050
Optional Engraved Nameplate	ACW-NFH050



(28 x 29cm) 32 Hooks	ACW-FHB032
-----------------------------	------------



8 Hook (11cm x 26cm)	ACW-FHB008
16 Hook (11cm x 26cm)	ACW-FHB016
17 Hook (11cm x 26cm)	ACW-MMB002
20 Hook (11cm x 26cm)	ACW-MMB003
Engraved Nameplate	ACW-NFH020

Storage Board for Markers with Marker Foot™ Tape (11cm x 26cm x 3mm)



With Engraved Name	ACW-NMF001
Without Engraved Name	ACW-NMF002



Suction Cup Marks Board (10cm x 25cm)	ACW-MMB001
--	------------

Economy Marker Board (Marlite™) (20cm x 30cm)



16 Hook	ACW-HBM016
20 Hook	ACW-HBM026

Acrylic Scales

These special scales are used when the radiologist needs to indicate locations or measurements in the imaging field. We engrave deep, 0.5 cm. graduations into tough acrylic plastic and fill them with a special radiopaque compound to leave distinct images on the radiograph. These scales have a center line for topographic recordings. They are available in both the 45 cm. and 115 cm. lengths with a hanging hole for storage.



45 cm. Acrylic Scale (6.35mm L x 3.48mm H)

ACW-SAC045

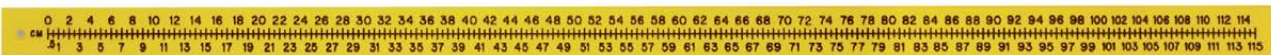
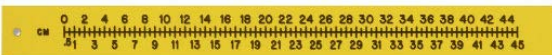
115 cm. Acrylic Scale (6.35mm L x 3.48mm H)

ACW-SAC115

Flexible Scales

This radiopaque extremity ruler is manufactured from a high performance, chemical-resistant plastic which can be sterilized using ethylene oxide or alcohol. Unlike acrylic rulers, this ruler is very flexible and virtually unbreakable.

These scales are used whenever measurements or locations in the image field are required. 1 cm. and 0.5 cm. graduations are engraved at least 0.76mm deep and filled with a special, flexible radiopaque material to give distinct and permanent readings on the radiograph. 115 cm. lengths are available in two thicknesses (1.5875mm and 3.175mm), and we also manufacture 45 cm. flexible scales (1.5875mm thick).



115 cm. X 1.6cm thick flexible scale (5.08cm wide x 121.92cm long)

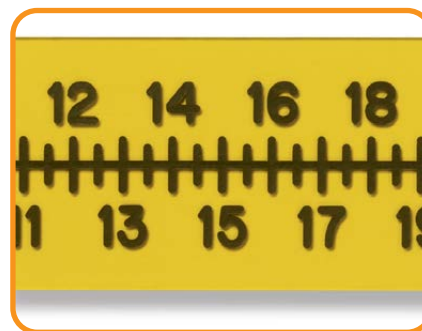
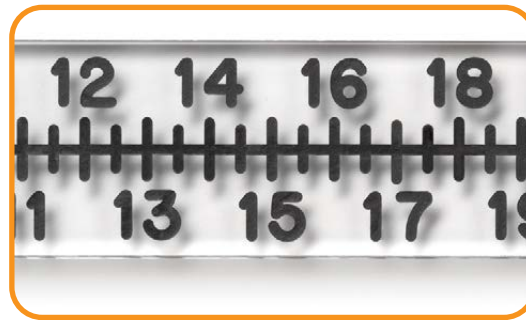
ACW-SFL062

45 cm. X 1.6cm thick flexible scale (5.08cm wide x 55.88cm long)

ACW-SFL062-45

115 cm. X 3.2cm thick flexible scale (5.08cm wide x 121.92cm long)

ACW-SFL125

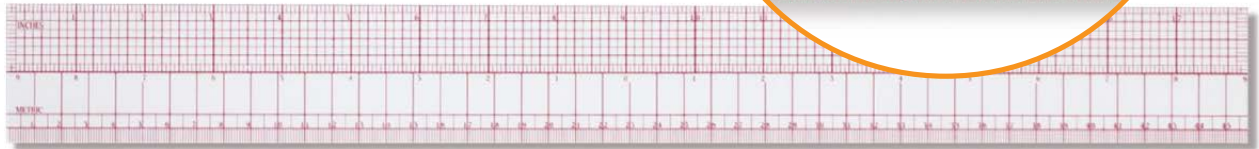


Transparent Rulers

These special scales are used when the radiologist needs to indicate locations or measurements in the imaging field. We engrave deep, 0.5 cm. graduations into tough acrylic plastic and fill them with a special radiopaque compound to leave distinct images on the radiograph. These scales have a center line for topographic recordings. They are available in both the 45 cm. and 115 cm. lengths with a hanging hole for storage.

18" Transparent Ruler (5cm wide x 45cm long) ACW-STR018

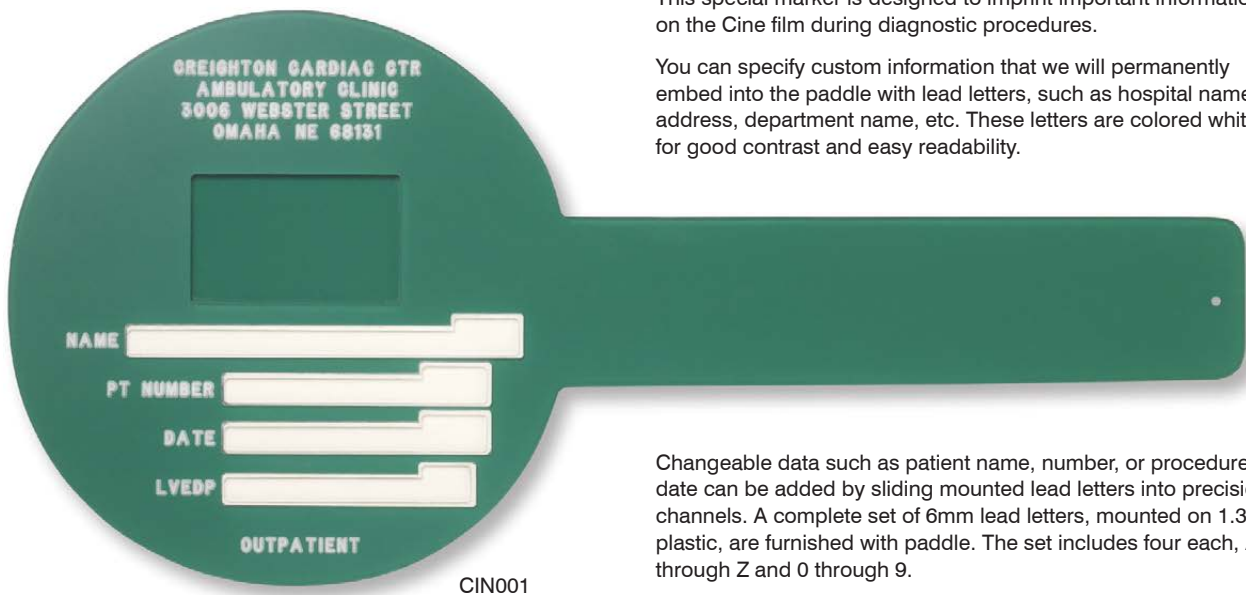
24" Transparent Ruler (5cm wide x 115cm long) ACW-STR024



Cine Marker Paddle

This special marker is designed to imprint important information on the Cine film during diagnostic procedures.

You can specify custom information that we will permanently embed into the paddle with lead letters, such as hospital name, address, department name, etc. These letters are colored white for good contrast and easy readability.



CIN001

Changeable data such as patient name, number, or procedure date can be added by sliding mounted lead letters into precision channels. A complete set of 6mm lead letters, mounted on 1.3cm plastic, are furnished with paddle. The set includes four each, A through Z and 0 through 9.

Akucal EVO Suction™

Scaling an X-ray image is essential to achieving the highest level of accuracy throughout the planning process, particularly for orthopedic templating. The Akucal™ is the world's #1 selling scaling tool, trusted by leading orthopedic surgeons. It is a must-have for every X-ray suite and is compatible with all imaging software—or can be used independently. Functionality, durability, sanitation, and a passion for precision come standard.

AKUCAL™ EVO Suction

The Akucal™ is the design result from feedback of thousands of Surgeons worldwide. Accuracy, usability, quality, reliability and diversity make the Akucal™ a cornerstone of digital radiography and orthopedic scaling. A solid aluminum suction cup allows for a small 3 inch footprint on the table or vertical on a wall bucky. The fully-covered and positional arm assures easy sanitation. The marker is removable and the size of the marker is verified in the image. Available in 25MM, 1 inch and 30MM. 25MM is the standard.

AKUCAL™ EVO Suction

JTM-ES-25-11-%



Rollr Markers™

Rollr Markers™ are the most precise x-ray markers on earth. Each surgical stainless steel marker is guaranteed to be absolutely perfect in every way and will not blemish or dent if dropped. Every facility should have extras on hand. We sell them in packs of 6 and offer them in 25MM, 1 inch and 30MM. 25MM is the standard.

Rollr Markers™

JTM-SPH-6PK-11-%



Ball Claws™

Extra Ballclaws™ come in handy if sanitation or continuous usage is a concern. Ballclaws™ are designed to be disposable but highly reusable under most conditions. Extras are sold in 6 packs.

Ball Claws™

JTM-BC-6PK-11-%



Akucal Flat-base Add-on

The Akucal Flat Base is an Add-On for the already versatile Akucal EVO that allows you to use your Akucal on a horizontal surface that is heavily textured, padded, or is simply not a conducive surface for use of a suction cup. The footprint of the acrylic base is 6"x8" and has a padded bottom. The Flat Base Add-On is a must have for Veterinary Clinics and trauma units. *Akucal suction not included

Akucal Flat-base Add-on

JTM-FLAT-11



Akucal Undercover™

The same sleek, stylish design that has become the standard for J2 Medical now offers yet another great advancement in image scaling. The "Undercover" uses a protective 2.2 mm copper shield to provide better clarity of the calibration marker by absorbing low attenuation scatter during body part imaging that requires higher beam intensity.

Akucal Undercover™

JTM-UC-11



Akucal Smoothee™ Surface Strips

Smoothee™ surface strips make any NON smooth surface suctionable. For use with the Akucal suction base when a horizontal or vertical surface is textured. Each pack includes six 4x6 inch adhesive backed strips. Simply peel and stick as needed.

Akucal Smoothee™ Surface Strips

JTM-SMOOTH-11



Akucal EVO Suction™ Packages



Akucal All-In-One Package

The Akucal All-In-One package features all the tools and accessories needed for efficient image acquisition and templating. The All-In-One package includes:

- One (1) Akucal EVO Image Scaling Tool
- One (1) package of Rollr Precision Markers (3 spheres)
- One (1) Akucal Flat Base for heavily textured, padded, or any surface non conductive for a suction cup. Size 6"x8".
- One (1) Akucal Undercover to provide better clarity of the calibration marker by absorbing low attenuation scatter during body part imaging that requires higher beam intensity.

Akucal All-In-One Package

JTM-ES-AIO-11-%



Akucal PowerPAK™

All Inclusive Variety Pack (2 rooms)

The PowerPAK™ is a starter package for up to two rooms. Two (2) Akucal EVO suction stands, two extra Rollr markers (4 in all), 2 extra Ballclaws (4 in all), and two (2) Smoothee™ strips.

All Inclusive Variety Pack (2 rooms)

JTM-PWRPK-11-%



Akucal HeftyPAK™

All inclusive variety pack (4 rooms)

The HeftyPAK™ is a starter package for up to four rooms. Four (4) Akucal EVO suction stands, four extra Rollr markers (8 in all), 4 extra Ballclaws (8 in all), and four (4) Smoothee™ strips.

All inclusive variety pack (4 rooms)

JTM-HFPK-11-%



Akucal FatPAK™

All Inclusive Variety Pack (8 Rooms)

The FatPAK™ is a starter package for up to eight rooms. Eight (8) Akucal EVO suction stands, eight extra Rollr markers (16 in all), 8 extra Ballclaws (16 in all), and eight (8) Smoothee™ strips.

All Inclusive Variety Pack (8 Rooms)

JTM-FTPK-11-%



CytoCORE®

CytoCore® is the world's first motorized, rotating fine needle biopsy device. Designed to harvest more cells, in fewer passes, using the smallest needles.



Minimally Invasive

Compatible with any fine needle. Pencil grip design allows for single hand operation while imaging.

Generous Sample

CytoCore rotates the needle at the press of a button during biopsy. The spinning motion shears off large intact clusters of cells.

Unrivalled Technology

The CytoCore is designed to harvest more cellular material, in fewer passes, using the smallest gauge needles.

Benefits:

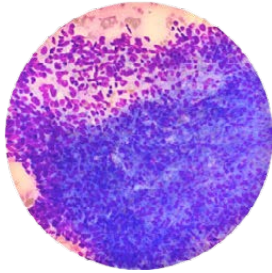
- Increased cellular yield versus traditional FNA (fine needle aspiration) technique
- Aims to reduce non-diagnostic rate vs. traditional FNA technique
- Reduced sampling time with fewer passes
- Reliable, repeatable cell yield with ability to collect micro-cores
- Compatible with a range of needle gauges and lengths
- 5ml syringe with adjustable suction



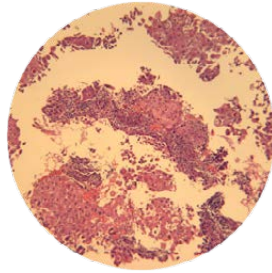
Small Needle. Big Results.

CytoCore is designed to harvest more cellular material in fewer passes, and the product achieves this with its proprietary spinning motion that enables needles to shear off large intact clusters of cells. From a design standpoint, CytoCore is compatible with a variety of needle gauges and lengths, has an ergonomic slide switch that draws back to initiate a single stroke motor, and includes a 5ml syringe with adjustable suction. This allows the product to perform in any soft tissue, be it lymph node, parotid, thyroid, lung, and/or any other mass of cells.

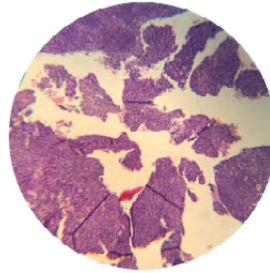
Furthermore, CytoCore showcases minimal bleeding complications and risks compared with more invasive biopsy devices such as core biopsy. CytoCore's ability to obtain such significant cellular yields has also boosted its usage in cancer patients as an avenue to determine point mutations without the need for multiple biopsy passes or larger gauge, firing biopsy devices.



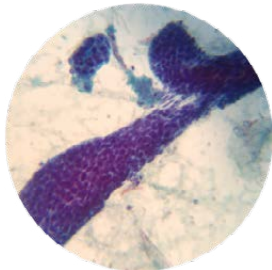
Head Neck Mass
Diff-Quick



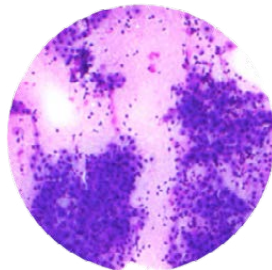
Lymph Node
Cell Block



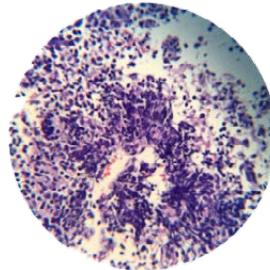
Parotid
Cell Block



Parotid
Diff-Quick



Thyroid
Diff-Quick

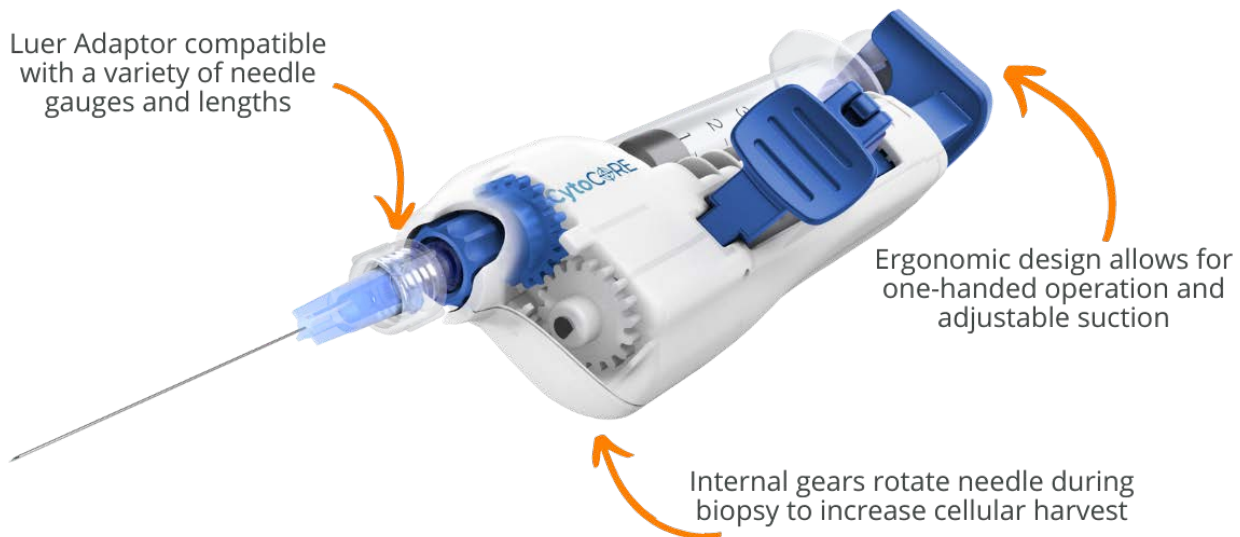


Lymph Node
Cell Block

CytoCORE

CytoCore is
approved for use
in any soft tissue

Luer Adaptor compatible
with a variety of needle
gauges and lengths



Ergonomic design allows for
one-handed operation and
adjustable suction

Internal gears rotate needle during
biopsy to increase cellular harvest

CytoCore is designed to harvest more cells,
in fewer passes, using the smallest needles

Handwriting practice lines consisting of 28 horizontal dotted lines.



Explore Our Range

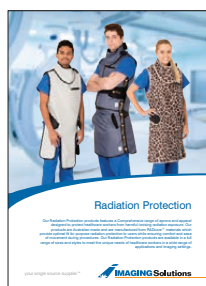
At Imaging Solutions, we take pride in offering an extensive and comprehensive range of products designed to cater to the diverse needs of healthcare facilities across the globe. Our commitment to providing top-quality equipment and technology solutions is at the core of our Preferred Supplier Agreement. This ensures that our customers receive unparalleled access to the best in class products, while benefiting from the tangible value we deliver through managing and containing operational costs. With a broad spectrum of offerings, our Single Source Supply agreements are the ideal solution for meeting your facility's specific needs.

As your trusted partner, Imaging Solutions is dedicated to providing a seamless and integrated experience, allowing you to focus on delivering exceptional patient care. With our Preferred Supplier Agreement, you can have confidence that you are investing in the most advanced and reliable products in the industry, all while enjoying the cost-saving benefits that our Single Source Supply agreements provide. Explore Our Range and discover the Imaging Solutions difference.

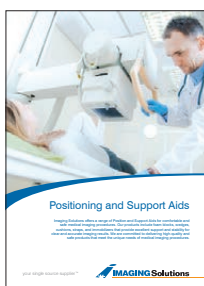
Your Single Source Supplier™

Established initially as a small medical imaging hardcopy film and consumables distributor, specialising in analogue based imaging technology, the company very quickly identified the need for a reliable supply source of high quality imaging accessories. As a result, the business targeted a niche of premium suppliers of imaging accessories and over a short space of time acquired distribution access to develop an initial foundation for today's expansive and comprehensive accessories portfolio. These industry wide market leading brands converge to develop a comprehensive product portfolio offering the company markets today.

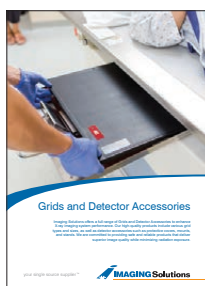
Effectively on completion of our initial growth phase, in building the accessories range offering, Imaging Solution set about the task of identifying the world's market leading brand, in every functional specialisation existing in the imaging market.



Radiation Protection



Positioning and Support Aids



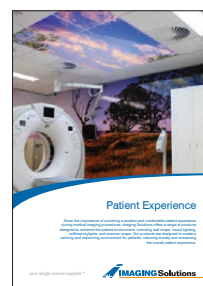
Grids and Detector Accessories



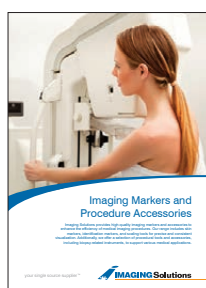
MRI Equipment and Accessories



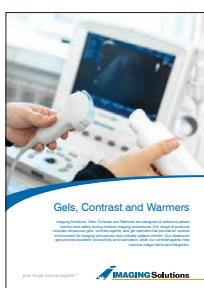
Design and Construction



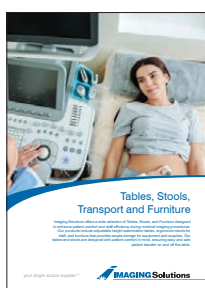
Patient Experience



Imaging Markers and Accessories



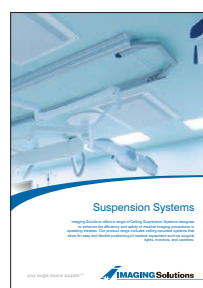
Gels, Contrast and Warmers



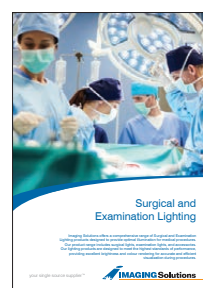
Tables, Stools, and Transport



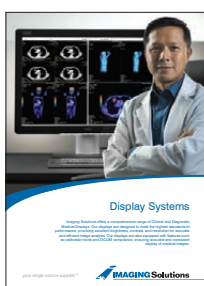
Trolleys, Stands, Carts and Storage



Suspension Systems



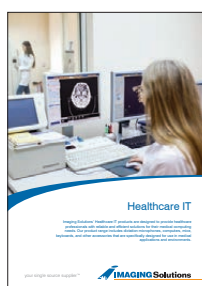
Surgical and Examination Lighting



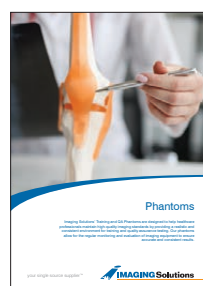
Display Systems



Data Management



Healthcare IT



Phantoms

your single source supplier™

your single source supplier™

Global / Online

www.imgsol.com
info@imgsol.com
+61 7 3387 0400

Australia

PO Box 3225
Loganholme, QLD, 4129
Australia
1300 132 100

New Zealand

PO Box 113098
Newmarket, Auckland
New Zealand
0800 723 776

United States

222 W. Las Colinas Blvd, Suite 1650E
Irving, TX, 75039
USA
(866) 586-0915

Europe

25 Bd Romain Rolland,
92120 Montrouge
France
+33 6 5262 3244

